

Head Office

Lammhults Möbel AB
Växjövägen 41
SE 363 45 Lammhult, Sweden
P + 46 472 26 95 00
info@lammhults.se
www.lammhults.se

Postal address
Lammhults Möbel AB
Box 26
SE 363 03 Lammhult, Sweden

Showrooms

Stockholm
Lammhults
Adolf Fredriks Kyrkogata 15
SE 111 37 Stockholm, Sweden
P +46 8 412 60 70

Göteborg
Lammhults
Studio L6
Lasarettsgatan 6
SE 411 19 Göteborg, Sweden
P +46 31 13 83 90
M +46 70 965 44 80
M +46 70 316 06 70

Malmö
Lammhults
Slussgatan 10
SE 211 30 Malmö, Sweden
M +46 70 263 80 15

Copenhagen
Sankt Jørgens Allé 5, 2. sal th
DK 1615 Copenhagen, Denmark
P +45 24 59 89 59

Oslo
Pilestredet 75c, inngang 38
NO 0354 Oslo, Norway
P +47 97 76 98 11

London
3 Albemarle Way
Clerkenwell London,
EC1V 4JB, UK
P +44 20 88 54 42 29

Paris
5 bis rue Gabriel Laumain
FR 75010 Paris, France
M +33 609 782 730

Woerden
Polanerzandweg 1
N 3446 CC Woerden,
The Netherlands
P +31 348 44 33 23

L
M
M

H
I
L
T

S

innovative since 1945

lammhults.se

LAMMHULTS

LAMMHULTS

L
M
M

H
I
L
T

S

Lammhults from A to X

a dictionary for 2020

Chairs & armchairs



Easy chairs & sofas



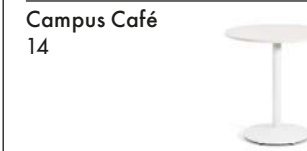
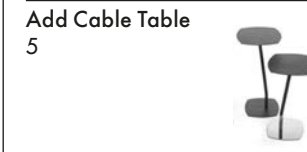
Barstools & stools



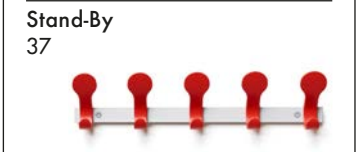
Modular seating



Tables & trolleys



Accessories



From A as in Add all the way to X as in X75, this dictionary tells of not only our products – made for offices, conferences, lounges, for eating, working, for thinking, sleeping (?), in short: for aspects of life – but also of some of the things that makes us Lammhults, e.g. our history (T for Timeline), people (C for Craftsmanship), and our ideas (D for Design) & ideals (S for Sustainability). And of course, where you can find us, at L for Lammhult.

(and remember: w for www.lammhults.se for up-to-date information & inspiration)

A

Add, chair & stool
 Add Move, chair & stool
 Add Work, chair & stool
 Add Cable Table, table
 Add, table
 Add, coat hanger
 Add, storage/magazine rack
 A-Line, modular seating
 Addit, modular seating
 Allard, Gunilla
 Aperi, easy chair & sofa
 Archal, chair
 Archal T&X, table
 Area & Area Radius, modular seating
 Attach, table
 Attach Outdoor, table

Add

The contemporary workplace is an active seating area, and Add brings convenience to the active worker. Anya Sebton explains: "I made the back of the chair quite generous and embracing in its shape." And with its unique expression, Add strikes the perfect balance between aesthetics and function.

Add chair

Active and relaxed seating in one and the same chair.



Design Anya Sebton
Frame 22 mm steel tubing, powder coated or chromium plated. With or without glides.
Seat Molded wood with black polyurethane or upholstered with high resilient polyurethane foam.
Back Black polyurethane or upholstered. Suspendable with built-in slide protection.
Upholstery Fabric/leather

H 80 SH 46 W 46 D 47

Add Move chair

A flexible, multifunctional and compact office chair.



Design Anya Sebton
Frame 22 mm steel tubing, powder coated or chromium plated. Casters in chrome or black.
Seat Molded wood with black polyurethane or upholstered with high resilient polyurethane foam.
Back Black polyurethane or upholstered. Suspendable with built-in slide protection.
Upholstery Fabric/leather

H 80 SH 46 W 48 D 56

Add Work chair

Maximum comfort alongside optimum mobility.



Design Anya Sebton
Base 22 mm steel tubing, powder coated or chromium plated. Height adjustable 5-feet swivel. Casters in chrome or black.
Seat Molded wood with black polyurethane or upholstered with high resilient polyurethane foam.
Back Black polyurethane or upholstered. Suspendable with built-in slide protection.
Upholstery Fabric/leather

H 80 SH 46-52 W 65 D 65

Add stool



Design Anya Sebton
Frame 22 mm steel tubing, powder coated or chromium plated. Foot rest always in chrome. With or without glides.
Seat Molded wood with black polyurethane or upholstered with high resilient polyurethane foam.
Back Black polyurethane or upholstered. Suspendable with built-in slide protection.
Upholstery Fabric/leather

H 49/67/81/99/112
 SH 46/63/78
 W 46 D 47/50/52

Add Move stool



Design Anya Sebton
Frame 22 mm steel tubing, powder coated or chromium plated. Casters in chrome or black.
Seat Molded wood with black polyurethane or upholstered with high resilient polyurethane foam.
Back Black polyurethane or upholstered. Suspendable with built-in slide protection.
Upholstery Fabric/leather

H 49/96 SH 46/63
 W 48 D 56

Add Work stool



Design Anya Sebton
Base 22 mm steel tubing, powder coated or chromium plated. Height adjustable 5-feet swivel. Casters in chrome or black.
Seat Molded wood with black polyurethane or upholstered with high resilient polyurethane foam.
Upholstery Fabric/leather

H 49 SH 46-52 W 65 D 65



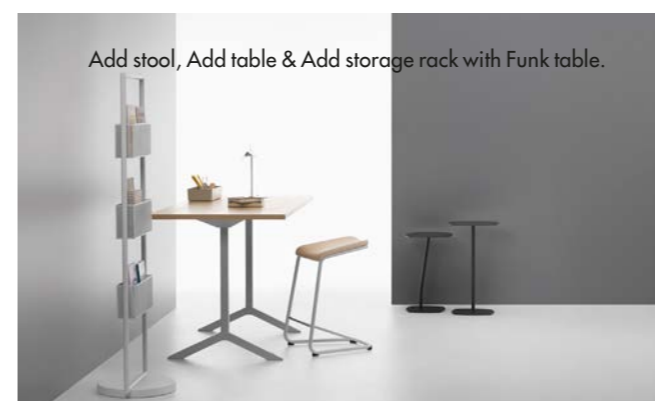
Add Move chair with Archal T table.



Add Work chair & Add Work stool with Attach table.



Add Move chair & Add coat hanger with Funk table.



Add stool, Add table & Add storage rack with Funk table.

Add Cable Table

Designed to never let multiport charging to be more than an arm's length away.



Design Anya Sebton
Frame Spin formed steel foot, texture powder coated with pillar of 25 mm steel tubing. Incl. 5 m retractable cord reel.
Table top 3 mm steel sheet, texture powder coated. Felt glides.
Options 2 Power outlets or 1 power outlet+2 Power USB or 2+2 Power USB. Note! Plug and sockets only with Schuko standard. Removable cork top

H 66/56 W 37 D 35

Add table

A small side table that comes to you, or comes with you.



Design Anya Sebton
Frame Foot plate of steel, powder coated or chromium plated and pillar of 25 mm steel tubing, powder coated.
Table top 3 mm steel sheet, powder coated. Felt glides.

H 66/56 W 37 D 35

Add coat hanger

Stores just about anything you need, simply and elegantly.



Design Anya Sebton
Foot plate Cast iron, texture powder coated, black or white. Adjustable feet.
Frame 28 mm steel tubing, powder coated. Clothes rail in oval steel tubing, 30x15 mm, chromium plated, or natural ash. Hooks in black or white polyamide.
Options Swivel foot plate. Umbrella stand. Linking device.

H 170 W 50/75 D 42

Add storage rack/magazine rack

Your stored stuff never looked better.



Design Anya Sebton
Foot plate Cast iron, texture powder coated, black or white. Adjustable feet.
Frame 28 mm steel tubing, powder coated. Storage rack with 3 boxes and magazine rack with 3 perforated boxes, all powder coated.
Options Swivel foot plate. Plastic pot for plants. Linking device.

H 170 W 50/75 D 42

A-Line modular seating

Sectional seating with the look of a sofa.



The light, thin-line design of A-Line is crafted by balancing style with technology. A support beam, a wide flat aluminum extrusion, is concealed in the seating, reducing the mass of the seat. The internal construction of the seat and back are unique. Anya Septon explains: "I wanted A-Line to be really thin. This required an innovative 'pocket spring' system inside the seat foam for maximum comfort. Comfort is really important for this product. With A-Line we wanted a softer and more flexible solution."

A-Line is available with sled or pillar bases, as well as optional modular connecting tables.

Design Anya Septon
Frame Support beam of extruded aluminum. 1-4 seats.
Legs Powder coated or chromium plated.
Seat Plywood with injected expanded polyurethane foam.
Upholstery Fabric/leather
Options Pillar frame, powder coated or chromium plated (not easy chair or two seater sofa). Upholstery in two colors.
Arms in cast aluminum, powder coated black.
Table sections in 12 mm white compact laminate with black edges.

H 81 SH 44
 W 63/125/188/251 D 69



Addit modular seating

A collection of modular components that inspires to creative and flexible solutions.



Addit corner sofa & Addit ottoman with Add table.



Addit modular seating.

With a high level of comfort and several different units, Addit is a collection of modular components that inspires to creative and flexible solutions. Addit consists of six modular units – right-unit, left-unit, corner-unit, centre-unit, and two footstool benches. Thanks to the innovative, patented multidirectional magnetic linking device that Lammhults has developed, the units can be linked entirely according to the users wishes. Each unit can also function as a fully upholstered stand-alone furniture piece. Two ottomans are also available.

Design Anya Septon
Legs Cast aluminum, powder coated or chromium plated. Felt glides.
Frame 19 mm steel tubing, powder coated or chromium plated.
Shell Fibre board with high resilient polyurethane foam.
Built-in magnetic linking device.
Upholstery Fabric/leather
Options Frame & back plate in leather (footstool only in fabric). Upholstery in two colors.
Frame and legs in two colors.

H 80 SH 47 W 92/100 D 77



Allard, Gunilla



When newly graduated in 1988, Gunilla was selected as one of five students to participate in a student workshop arranged by Lammhults, which led to the start of her career as a furniture designer. Gunilla became Lammhults' first female designer and her continued work for Lammhults has resulted in numerous designs. Cinema easy chair, designed for Lammhults in 1994, is perhaps the most well-known of her designs. The statement of the jury of the George Jensen prize received in 1996, one of many prestigious awards received, well describes her products. "... strict, minimalist and elegant design. The proportions and details of her furniture reveal a genuine sense of quality." Gunilla's collaboration with Lammhults during 30 years, as well as designing kitchens, glassware, lighting and carpets, makes her one of the foremost names in contemporary Scandinavian design.

Designs for Lammhults include: Cajal, Cargo, Carousel, Chicago, Cinema, Comet, Cooper.



Cajal

Chicago

Aperi easy chair & sofa

Pure comfort, with modern function and appeal.

The compact monolithic form of Aperi brings a sense of calm to the work environment. The dynamic office relies more and more on the comforts of home, while the home is often an office. Lifestyle is now workstyle, and Aperi addresses both in balance. Aperi is available as a single seat easy chair, as well as two and three seat versions.

Design Julia Läuffer & Marcus Keichel
Frame Black texture powder coated metal base with adjustable feet.
Seat Nozag. Polyurethane foam padding in the seat and back.
Upholstery Fabric
Options Stitched seams in diverging color.

H 78 SH 44
 W 76/150/226 D 80



Aperi 2 & 3-seater sofa & Aperi easy chair with Add table.



Aperi easy chair with Add table and Chicago III trolley.



Archal chair

The many variations allow Archal to address any seating requirement. With Style.



Archal is a family of seating solutions for a variety of applications from offices, conference centers and institutions, to home interiors. Archal brings a new level of innovation to the Lammhults seating collection. Using a frame of cast aluminum, Archal goes beyond the limitations of bent steel tubing, with the sculptural form of solid cast aluminum. Produced locally, the Archal frame is made using 99.9% recycled material, the equivalent of more than 300 aluminum soft drink cans. Archal is available with or without arms, in three back heights, and in three different styles: a four-leg stacking version, a four-star swivel base version with glides, and a five-star swivel base version with casters.

Design Johannes Foersom & Peter Hiort-Lorenzen
Frame Cast aluminum, texture powder coated or polished.
 4-leg frame, stackable. Glides.
 4-feet swivel base. Glides.
 5-feet height adjustable swivel base. Casters.
Back Shell in 3 different heights, all fully upholstered.
Armrest (optional) Cast aluminum, texture powder coated white, graphite or polished.
Options Quilting.
Upholstery Fabric/leather

H 80/88/107 SH 45/45-50
 W 51/55/57/67 D 57/67



Archal armchair with Archal T table.



Archal armchair with Funk table.



Archal XL armchair with Ponto table.

Archal XL chair & easy chair

With a generous seat width, with wide armrests and extra padding for great comfort. Carrying the Lammhults' signature touch of elegance with utmost craftsmanship, Archal XL is truly XL – available in either Conference or Lounge versions.

Design Johannes Foersom & Peter Hiort-Lorenzen
Frame Cast recycled aluminum, texture powder coated white, graphite or polished.
 5-feet swivel base, 360°, height adjustable, with casters.
 5-feet swivel base, 360° (only on easy chair).
Armrest (optional) Cast recycled aluminum, texture powder coated white, graphite or polished.
 Leather covered as option.
Upholstery Fabric/leather with quilting.

H 109/122 SH 42/47-52
 W 67 D 67



Archal T&X table

A wide range of heights, top sizes and materials provide the greatest project flexibility.



Design Johannes Foersom & Peter Hiort-Lorenzen
Frame 40x40 mm steel tubing, texture powder coated or chromium plated.
Foot Cast aluminum, texture powder coated or polished. Adjustable feet. Linkable.
Top 19 mm fibre board in: Melamine: white/grey, graphite or birch decor with matching plastic edge.
 High pressure laminate: Formica Collection Colors with matching plastic edge.
 Veneer: natural ash, oak, birch or beech with matching wooden edge.
 Stained ash: white/grey or graphite with matching wooden edge.
 Linoleum: Desktop Mushroom or Charcoal with matching edge.

H 73/90/110:
 W 62 L 120/140/160
 W 90 L 120-160/240

H 62/73/90/110:
 Ø 70/80
 60x70/70x70/70x80/80x80



Area & Area Radius modular seating

Play with color, shape and form. Create a room within a room. Regroup, using the innovative linking device Quicklink, and turn the room into a waiting area or a casual lounge – Area & Area Radius always responds with consistent style.



The Area series consists of several modular units with high or low back, plus a foot stool, a table in perforated sheet metal and an easy chair with two different base options. Modular construction allows assembly using a unique patented magnetic linking system. The foot stools are also modular and can be linked together to form smart benches or tables, alone or with seating modules.

Design Anya Septon
Sled base 22 mm steel tubing, powder coated or chromium plated. Glides. Modules with high back incl. adjustable feet.
Shell Fibre board with high resilient polyurethane foam. Built-in magnetic linking device.
Table frame 10 mm solid steel with 1 mm perforated steel sheet. Powder coated.
Upholstery Fabric/leather



For dimensions of all Area & Area Radius components, please see lammhults.se

Attach table

Technology marries art in the construction of this series of tables.

This table series brings the principles of basic physics to the function of table construction. Sleek extruded recycled aluminum beams and structural extruded recycled aluminum legs are linked under the table and secured by gravity.



Design Troels Grum-Schwensen
Legs Die-cast aluminum, texture powder coated. Alternatively texture powder coated in white or black with polished sides.
Beams Extruded anodized recycled aluminum with transparent or black end caps.
Feet Adjustable in black or orange acetal.
Top 22 mm wooden board in: Veneer: natural ash or oak alt. stained ash with matching wooden edge.
Linoleum: Forbo Furniture with matching edge.
High Pressure Laminate: white, with matching plastic edge.
Melamine: white, with matching plastic edge.
Options Cable housings in black or white textile.
 Data and communication ports

H 74/90
 W 90 L 210/290
 W 120 L 240/290
 W 150 L 240/600
 W 200 L 400/480
 Ø 120/150/170/200

Attach table with Add stool and Add Move stool.



Attach table with Carousel armchair and S70-12 coat stand.



Attach Outdoor table

The perfect choice for the office atrium, home garden or outdoor café.



Attach Outdoor uses the same clever design as Attach, with the extruded aluminum beams and attachable legs of cast aluminum, but is combined with a table top of wooden slats. Choose between table top in natural or dark oiled, low maintenance material, Accoya. Accoya is the world's leading high technology long life wood and has properties that match or exceed those of the best tropical hardwoods and treated woods, yet is manufactured using wood from sustainable sources.

Design Troels Grum-Schwensen
Legs Die-cast aluminum, texture powder coated.
Beams Extruded anodized recycled aluminum with transparent or black end caps.
Feet Adjustable in black acetal.
Top 22x150 mm wooden slats of natural alt. dark oiled Accoya. Bevelled edge.
Options Foot with floor anchor. Maintenance kit.

H 74/90 W 90/120 L 210/315



B

Boss & Mini Boss, waste paper bin

Boss & Mini Boss waste paper bin

Designed to give associations to nature, with the hope that it will inspire people to take care of our environment.



Boss comes in steel or ash veneer and in two sizes, the larger one is well suited for public environments and offices and the smaller one, Mini Boss, is an excellent choice for the personal workplace or home office. Separation at source can be clarified by selecting different colors on the bins.

Design Tuva Rivedal Tjogen
Frame 1,5 mm steel sheet, powder coated, with matching lid.
Alt. ash veneer, natural or black stained, with powder coated steel lid. Adjustable plastic glides.

H 40/73 W 27/36

Mini Boss waste paper bin with Add Work stool, Add coat hanger and Funk table.



C

- Cajal, easy chair & sofa
- Cajal, table
- Campus, chair
- Campus Air, chair
- Campus, barstool
- Campus Air, barstool
- Campus, table
- Campus Café, table
- Cargo, trolley
- Cargo Support, trolley
- Cargo Gastro, trolley
- Carousel, chair
- Chicago, easy chair & sofa
- Chicago, trolley
- Cinema, easy chair & sofa
- Club, easy chair
- Color choices
- Comet, chair
- Comet Sport, chair
- Comet Sport, barstool
- Comet XL, chair
- Comet XL lounge, easy chair
- Cooper, table
- Craftsmanship

Cajal sofa

Revealing the beauty of structure.



The Cajal collection celebrates the modernist clarity of structure, with the accent on its exposed frame. Gunilla Allard explains that the visible steel tubing in her design encloses the back "like the stroke of a pen or a cajal pencil".

The seat consists of two moldings that enclose the steel tubing: the inner molding for comfort; the outer for stability. Available as a small or large sofa and an easy chair, Cajal emphasizes comfort, with added support for the lower back. Parallel seams on the sofa back add rhythm and character. Combining complimentary or

contrasting upholstery and tubing colors offers a wide range of style expressions.

Design Gunilla Allard
Frame 18 mm steel tubing, powder coated or chromium plated. Glides.
Shell Molded glass fibre reinforced polyurethane. Seat in plywood with molded high resilient polyurethane foam. Large sofa incl. pocket-spring.
Options Upholstery in two colors.
Upholstery Fabric/leather

H 77 SH 42/45
 W 140/120 D 59/65



Cajal sofa with Chicago III trolley.

Cajal easy chair



Design Gunilla Allard
Frame 18 mm steel tubing, powder coated or chromium plated. Glides.
Shell Molded glass fibre reinforced polyurethane. Seat in plywood with molded high resilient polyurethane foam.
Options Upholstery in two colors.
Upholstery Fabric/leather

H 77 SH 45 W 62 D 57

Cajal table

The thin but strong solid steel frame gives Cajal table an airy expression.



Different sizes allow you to set up the tables overlapping each other, creating beautiful combinations.

Design Gunilla Allard
Frame 12 mm solid steel, powder coated or chromium plated. Glides.
Top 16 mm plywood with natural or stained ash veneer or linoleum, Mushroom alt. Charcoal.
 Size 40x40 also available in Carrara marble.

H 45 40x40, 40x75, 75x75
 H 52 40x100, 75x75

Campus

A technical and aesthetic success, at home and abroad.



Campus stands apart from all of its predecessors for one unique aspect: its dual identity. A single, solo Campus chair is perfect in the simplicity of its design. But Campus has a parallel identity. The designers explain: "The focus with Campus was always on all the requirements for places where you need a lot of chairs in the same place." Campus stacks; Campus links; Campus can be managed easily with its trolley. Campus complements conference, office, institutional and residential settings with its quiet capable style.



Campus chair



Design Johannes Foersom & Peter Hiort-Lorenzen
Frame 16 mm (sled base 11 mm) steel tubing, powder coated or chromium plated. Glides.
Seat, back, arms Natural ash, birch, oak alt. stained. Arms also in white, light grey or black polyamide (sled base also grey, orange, red, blue green or blue). Upholstered seat alt. completely upholstered.
 Stackable and linkable.
Upholstery Fabric/leather
Options Rubber glides. Felt glides. Chair hanger. Linking device. Trolley

H 76 SH 45
 W 47/53/54/62
 D 49/65

Campus barstool



Design Johannes Foersom & Peter Hiort-Lorenzen
Frame 16 mm steel tubing, powder coated or chromium plated.
Seat, back Seat and back in natural birch, beech, oak alt. stained. Upholstered seat alt. completely upholstered

H 95/110 SH 63/78
 W 48/49
 D 50/53

Campus Air chair



Design Johannes Foersom & Peter Hiort-Lorenzen
Frame 16 mm (sled base 11 mm) steel tubing, powder coated or chromium plated. Glides.
 The chair is also available with frame for outdoor use.
Seat, back, arms Glass-fibre reinforced polyamide, white, light grey, grey, black, orange, red, blue green or blue. Stackable and linkable.
Options Campus original polyamide armrests in white, grey or black. Frame for outdoor use. Felt glides. Linking device. Chair hanger. Trolley

H 76 SH 45
 W 47/53/54/62
 D 49/65

Campus Air barstool



Design Johannes Foersom & Peter Hiort-Lorenzen
Frame 16 mm steel tubing, powder coated or chromium plated.
Seat, back Glass-fibre reinforced polyamide, white, grey, black, yellow, orange, red, green or blue

H 95/110 SH 63/78
 W 48/49
 D 50/53

Campus table

A design simplicity in function and style.



The Campus table adds to the practical perfection of Campus as an office and conference solution. It is a straightforward table system, with a wide range of top sizes and shapes, combined with a clever system of modular legs and galvanized frame rails.

Design Johannes Foersom & Peter Hiort-Lorenzen
Legs 40x20 mm flat-oval steel tubing, powder coated or chromium plated.
Frame 40x20 mm galvanized steel tubing.
Top 19 mm chip board with off-white melamine and matching plastic edges. Some sizes also in birch or oak veneer with solid wood edges. Adjustable feet.

H 72
 W 70 L 140
 W 80 L 80/120/140/160
 W 120 L 140
 W 140 L 140



Campus Café table

A design simplicity in function and style.



Design Johannes Foersom & Peter Hiort-Lorenzen
Foot Cast iron, powder coated. Ø45 cm. Adjustable.
Top 19 mm fibre board in: Melamine: white/grey, alt. graphite or birch decor with matching plastic edge. High pressure laminate: Formica Collection Colors with matching plastic edge when possible. Veneer: natural ash, oak, birch or beech with matching wooden edge. Stained ash: white/grey or graphite with matching wooden edge. Linoleum: Desktop Mushroom or Charcoal with matching edge when possible.

H 72
 70x70/80x80
 Ø 80

Cargo trolley

Service. Style. Support.



The Cargo trolley collection brings utility and grace together, whether as a sideboard in the home or in office, or as a bar or serving trolley around dining areas in restaurants. Chrome plated steel tubing is joined together mechanically, without welding, to keep the Cargo frame clean and elegant.

Design Gunilla Allard
Frame 16 mm steel tubing, powder coated or chromium plated incl. casters.
 3 shelves of black or white laminate, leather, frosted glass or in combination. Handles in leather.

H 70/79 D 35/39 L 84



Cargo Support as above, but: Top shelf with trays in stainless steel with black rubber cloth, either 2 trays 290x323 mm or 1 tray 578x323 mm.



Cargo Gastro as above, but: Top shelf with trays in stainless steel with black rubber cloth and marble plate, either 2 trays 290x323 mm or 1 tray 578x323 mm.

Carousel chair

Maximum comfort in a compact format.



The conference chair Carousel provides maximum comfort in a compact format. The fully upholstered shell chair is equipped with a 360° comfort tilt which gives the seat shell a multi-directional movement creating a very gentle and flexible motion for the user. The wing-shaped armrest gives character and adds comfort to the soft enclosing seat shell. Carousel is available with 4-feet or 5-feet swivel base, with or without casters.

Design Gunilla Allard
Base 4-feet or 5-feet swivel base of recycled aluminum, powder coated or polished. Glides.
Back Molded with high resilient polyurethane foam.
Seat Molded recycled paper-board with high resilient polyurethane foam.
Upholstery Fabric/leather
Options Height adjustable (not for 4-feet). Armrest cover. Upholstery in two colors. Casters.

H 81/76-89 SH 46/41-54
 W 62/64 D 62/64



Chicago easy chair & sofa

The circular shapes are the product's signature, adding the function of air circulation to its structure. Soft rolls of upholstery support and breathe. Gunilla Allard tells us: "It was fun to explore the Chicago 'wave detail' with the upholstery department in the Lamhults factory. It was very special." Chicago's grace is available in both easy chair and sofa configurations.



Design Gunilla Allard
Frame 19 mm steel tubing, powder coated or chromium plated. Glides.
Base Plywood with injected expanded polyurethane foam.
Upholstery Fabric/leather

H 78/88 SH 43
 W 53/164 D 72/73



Chicago trolley

Style sense at work.



Steel tubing, joined mechanically, creates a refined structure. The unique casters add to the Allard design signature.

Design Gunilla Allard
Frame 16 mm steel tubing, powder coated or chromium plated.
Shelves Black or white laminate, frosted glass, leather or in combination. With casters.

H 43 Ø 90
 H 57 Ø 54
 H 72 Ø 54
 H 113 Ø 54



Cinema easy chair & sofa

An international celebration of scandinavian design.



Cinema is a model of efficiency in style and execution, with exceptional comfort and modest space requirements. Gunilla Allard points to her inspiration for Cinema found in the seating of sports cars: crafted leather stitching and strong-support comfort in a modest space. Cinema wears these influences well.

Design Gunilla Allard
Frame 16 mm and 19 mm steel tubing, powder coated or chromium plated.
Seat Nosag spring. Seat and back with injected expanded polyurethane foam. Leather arm covers.
Options Stitched seams in divergent color. Footstool available.
Upholstery Fabric/leather

H 78 SH 42 W 56/160 D 75



Club easy chair

Relaxed sitting.



A comfortable alternative to stiff, formal meeting chairs. The base is available either as sled base or as a swivel base.

Design Johannes Foersom & Peter Hiort-Lorenzen

Base Sled base of 28 mm steel tubing, powder coated or chromium plated. Swivel base 6 mm plate of steel, powder coated or stainless steel.

Seat Metal frame and molded high resilient polyurethane foam.
Upholstery Fabric/leather
Options Writing tablet.

H 69 SH 42 W 63 D 69



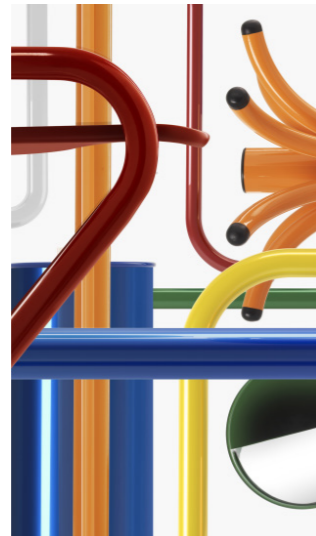
Color choices

At Lammhults, we offer powder-coats in close to 30 standard colors, we offer countless special options (as long as you can decide on a color), we offer stains, colored table tops... Why, you might ask?

The answer is that we love the way color changes things. Not only how it changes our mood, gives us energy, calms us, makes us comfortable, but more importantly, how it changes a room.

All you need is beautiful furniture and color. Choose a chair, a stool or a sofa and pick any color you like. We will help you make wonders. (And if you have problem choosing, there is always white. Or black. Or ...)

For more on our standard color options, see page 42.



Comet chair

The soft rounded shape gives the user a feeling of embrace.



The wide range of products in the Comet family have the unifying themes of design clarity and comfort. Comet is simple in its expression with a distinct form in which the seat and back are a gently shaped harmonious whole. The chair is fully upholstered, with stitched end seams creating a stylistic detail. The soft rounded shape of the chair's shell gives the user a feeling of embrace. The integrated lower back cushion adds to its comfort. Comet is a chair with many options, available with high or low back, with or without armrests, and two base options: a four-leg swivel base with glides, and a five-foot swivel base with casters.

Design Gunilla Allard
Base 16 mm steel tubing and solid steel, powder coated or chromium plated. 4-foot swivel base with glides and 5-foot swivel base with casters in chrome.
Armrest Flat iron, powder coated or chromium plated.
Seat Frame of glass-fibre reinforced polyurethane. Inside of seat shell covered with high resilient polyurethane foam. Back in two different heights.
Upholstery Fabric/leather
Options Leather arm covers. Memory return (only with glides).

H 86,5/101,5 SH 45,5
W 50/64 D 68/72



Comet Sport chair

Lighter & smaller without compromising shape or function.



Design Gunilla Allard
Frame 16 mm steel tubing, powder coated or chromium plated. Alternatively molded ash frame, natural or stained.
Base 5-foot swivel base, 360°. Casters in chrome.
Armrest Flat iron, powder coated or chromium plated.
Seat Molded seat shell with high resilient polyurethane foam.
Upholstery Fabric/leather

H 77 SH 45,5
W 47/50/58 D 58



Comet Sport barstool

Design Gunilla Allard
Frame 16 mm steel tubing, powder coated or chromium plated with foot rest of 10 mm solid steel, chromium plated. Glides.
Seat Molded seat shell with high resilient polyurethane foam.
Upholstery Fabric/leather

H 97/82 SH 78/63
W 44 D 48



Comet XL chair

For meetings and activities with demands on comfort and class, with a higher back and more generous seat width.

Design Gunilla Allard
Base 4- or 5-foot swivel base with memory return 360° and tilt. Powder coated or chromium plated. Casters.
Armrest Flat iron, powder coated or chromium plated.
Seat Frame of glass-fibre reinforced polyurethane. Inside of seat shell covered with high resilient polyurethane foam.
Upholstery Fabric/leather

H 120 SH 45,5/43,5-49,5
W 75 D 75



Comet XL lounge easy chair

Design Gunilla Allard
Base 4-foot swivel base with memory return 360° and tilt. Powder coated or chromium plated. Glides.
Armrest Flat iron, powder coated or chromium plated.
Seat Frame of glass-fibre reinforced polyurethane. Inside of seat shell covered with high resilient polyurethane foam.
Upholstery Fabric/leather

H 119 SH 42
W 59/64 D 69



Cooper table

A family of table solutions.



At first there was the Cooper easy chair. Then there was the Cooper footstool. And from the shape of the footstool came the Cooper table collection. Gunilla Allard explains: "I was inspired by the TV screens from the sixties with those rounded corners." The base is a match of the craft technology of laser-cut metal components with the artistic interpretation of Gunilla's designs. The success of the initial small side table lead to a complete table family.

Design Gunilla Allard
Frame Steel, powder coated or chromium plated.
Top 10/12 mm white compact laminate alt. 16 mm MDF with walnut veneer and matching edge or linoleum in Desktop Mushroom or Charcoal with matching edge.

H 42/52/72
45x55, 70x80, 100x110



Craftsmanship

While design and materials create potential for the overall look and feel of a furniture piece, craftsmanship determines the final result.

In the words of Chrissa, painter: "The craftsmanship lies in the knowledge and experience of how to achieve the best results. And in the attention to detail."

Or, when working with upholstery, a masterpiece of craftsmanship requires the instinct for perfect positioning of seams just as much as strength for covering a chair or large sofa. Every step demands experience, every material its own attention.

Says Mustafa, upholsterer: "A tight fitting fabric gives a modern expression and less wear and tear on the furniture. It stays nice and fresh longer, which is very important. But a tight fit also requires greater skill as an upholsterer, both from an aesthetic perspective and for the comfort of the users."

Says Anton, working with the assembly: "My colleagues and I are the last to examine end-products before they are packaged and sent to the customer. The products look the same, but they are really unique, handmade creations. So

many skilled craftsmen have contributed hands-on along the way to make every single product amazing. The Lammhults label is a guarantee of the high quality. Today there is so much 'easy-come-easy-go' furniture around. We can't stop the development. But here at Lammhults we represent other values."



D

Deco, table
Design
Detach Workstation & Unit
Dexter, stool

Deco table

A contribution to a more decorative environment.

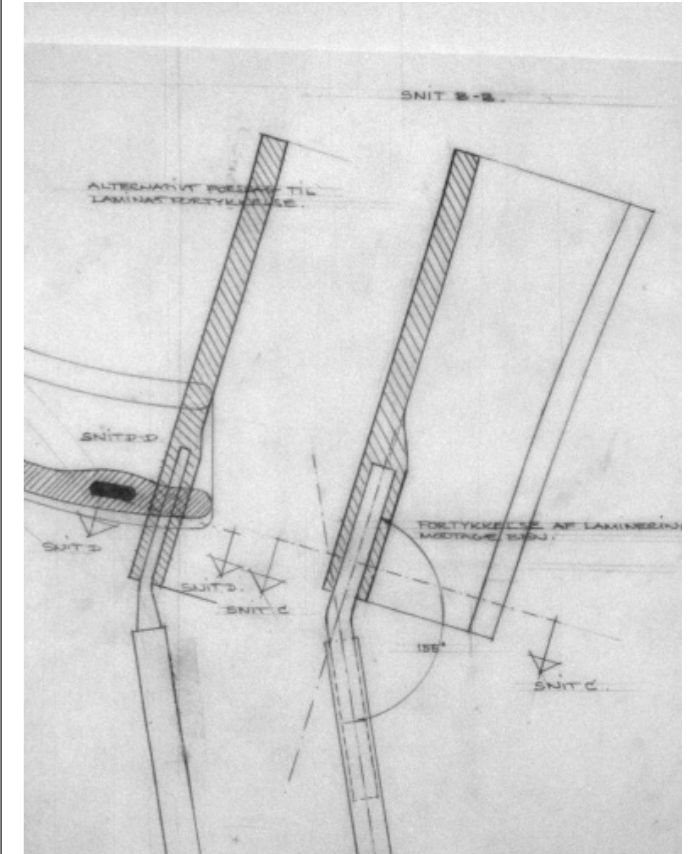
Deco came out of the Lammhults 'X-Works' project, and is a flexible table series with a focus on activity and quick meetings. Suitable for various types of environments, from the office to the bar, the cafe and even the home. Both indoor and outdoor.

Design Julia Prytz
Frame 8 mm or 12 mm solid steel, powder coated. Glides.
Top 12 mm black compact laminate alt. 16 mm plywood with natural or stained ash incl. matching wooden edge.

H 42/52/90/110
Ø 60/70/80



Design



Without design, Lammhults would not be Lammhults. Our founder, Edvin Ståhl knew this. He was doing fine producing metal knobs and handles in his workshop, but what he really, really wanted to do was to design and produce furniture. And from the day when he finally had his chance, he did not look back, and neither did Lammhults.

Fact is, design and designers push us to constantly move forward. Innovative use of material, constructions not thought of before, techniques unheard of, it all forces us to stay on our feet, to not relax and think we know it all. What we do know, though, is that design for its own sake is seldom interesting. Design is a tool to make a

chair lighter, a stool moveable, a table suited for new ways of furnishing an office. Design will help you endure days of meetings, make your dinner pleasing, your wait comfortable. Design makes the difference.

So we say thank you to our designers over the years: Börge Lindau & Bo Lindekrantz, Johannes Foersom & Peter Hiort-Lorenzen, Gunilla Allard, Anya Sebtou, Troels Grum-Schwensen, Julia Läufer & Marcus Keichel, Julia Prytz, Andrés Nilson, Tuva Rivedal Tjungen, Love Arbén, Jonas Bohlin, John Kandell, Åke Axelsson, Tom Ahlström & Hans Ehrich and many more (and more to come). Without you, Lammhults would not be Lammhults.

Detach

A power supply unit, and a sound absorbent screen. All in one. With a quiet, soft and coherent visual expression, allowing it to fit into different environments.



Workstation

The Detach system is not only a flexible workspace – it also creates soundscapes with its screendividing element. It has been designed to be both adaptable and flexible.

Design Troels Grum-Schwensen
Frame Extruded natural anodized aluminum. End cap in cast zinc, texture powder coated in black texture alt. zinc structure. Protective rubber feet underneath. 3 meter connecting cable

per profile included.
Screen Selectable in the fabrics: Dox, Salsa, and Camira Blazer. Thickness of screen: 30 mm.
Options Electrical outlet for UK, France, and Switzerland. Cover plate in anodized aluminum, 340 mm or 620 mm in length. Cable clamps. Cable channel in anthracite.

H 43 W 2975 D 15



Unit

Designed to be placed casually on any table-top you might want to temporarily use as a personal workplace – or to connect equipment, e.g during a lecture. Nice, ready, moveable.

Design Troels Grum-Schwensen
Profile Extruded natural anodized aluminum. End cap in cast zinc, texture powder coated in black texture alt. zinc structure.

Protective rubber feet underneath. Electrical outlet with five schuko power plugs on each side. 3 meter connecting cable per profile included.
Screen Selectable in the fabrics: Dox, Salsa, and Camira Blazer. Thickness of screen: 30mm.
Options Electrical outlet for UK, France, and Switzerland.

H 43 W 65 D 15

Dexter stool

A variety of applications with minimalist simplicity.



Dexter is a multifunctional set of solutions in one wire sculpture: seating, stacking, and linking. Dexter is also suitable for outdoor use, in a full range of powder coat colors.

Design Andreas Farkas
Frame 6 mm solid steel, powder coated. Glides. Standard powder coats for Dexter can be used outdoors.

H 45 W 46 D 29



E

Eco-labelling

Eco-labelling

At Lammhults we work actively with the Swedish furniture industry performance certification system, Möbelfakta, with an ever-increasing number of certified products. A piece of Lammhults furniture that lives up to the requirements of Möbelfakta has undergone extensive quality tests, is produced according to ethical guidelines, and has been approved according to environmental requirements. Möbelfakta is a guarantee of the highest quality. Lammhults' goal is to be able to certify all products in the range according to Möbelfakta. We also certify selected volume products according to the Nordic Ecolabel, which is the toughest eco-labelling system in the industry. Our strategy of certifying primarily our volume products means that we reach the greatest positive effect. Lammhults is certified according to ISO 14001 since 1998.



F

Foersom, Johannes
Funk, table

Foersom, Johannes

Johannes Foersom and Peter Hiort-Lorenzen have been working with Lammhults since the mid-1980s, so in some ways they are elder statesmen of Lammhults design today. They have been an instrumental part of the shift within Lammhults to become a more international company, not only because of their Danish nationality, but because of what Johannes refers to as "that little chair". That would be Campus, the chair that brought international acclaim to Lammhults in 1992.



Johannes Foersom and Peter Hiort-Lorenzen have been working as partners since 1977, guided by the principle that furniture must not dominate its surroundings. See also Hiort-Lorenzen, Peter

Designs for Lammhults include: Archal, Campus, Club, Funk, Grade, Portus, Quickly, Spira.



Funk table

With a strong visual identity, for any setting in the modern office.



Function, simplicity and clarity define the Funk table collection. Office work has evolved as workers meet in an increasing number of settings within the office. The workspace now can be a meeting room, an open office, a lounge or even the company café.

Funk is a set of strong, simple bases – a T-leg base and a four-legged starbase. The frame of recycled cast aluminum is available either polished or in powder coat colors.

Design Johannes Foersom & Peter Hiort-Lorenzen

Frame Cast aluminum frame, powder coated alt. polished. Adjustable feet. Rectangular tables can be linked.

Top 28 mm fibre board in: Melamine: white/grey or graphite with matching plastic edge. Ash: Natural or stained, white/grey or graphite, with matching wooden edge.

Options Power and communication ports.

H 42/72/90/110:

Ø 100 80x160

H 90/110:

Ø 70

H 72/90:

Ø 70/120/140

100x200, 120x120, 140x140

H 90/110:

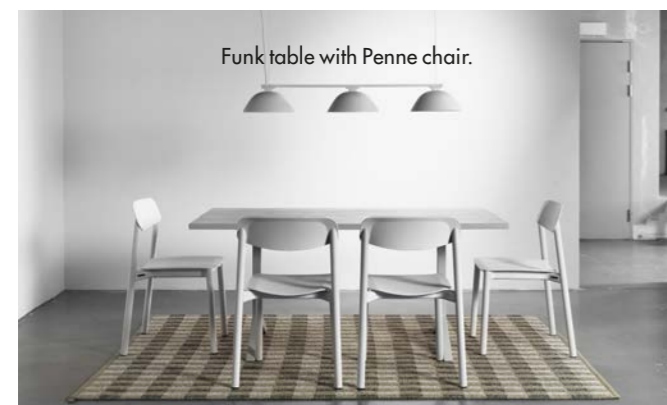
70x220

H 72:

120x210, 140x240



Funk table with Grade armchair.



Funk table with Penne chair.

G

Grade, chair
Grade Plus, chair
Grade, barstool
Grum-Schwensen, Troels

Grade chair

A totality of shape.

Five levels or 'grades' of relief are molded into the back of Grade, providing a visual rhythm to the chair's form. This, together with the choice of materials and color schemes, brings a new level of design sophistication to the plastic stacking shell chair category.

Design Johannes Foersom & Peter Hiort-Lorenzen

Frame 14 or 16 mm steel tubing, powder coated or chromium plated. Also with solid ash legs. Sled base 11 mm solid steel.

When powder coated, the frame matches the color of the seat.

Stackable and linkable.

4-star swivel base 360°, with foot of cast recycled aluminum and pillar with 40 mm recycled aluminum cover. Glides.

5-star swivel base 360°, height adjustable, with foot of cast recycled aluminum and pillar with 40 mm recycled aluminum cover. Casters.

Armrests Upper part in polypropylene matching the color of the seat shell.

Armrests, swivel 16 mm steel tubing, powder coated or chromium plated.

Seat shell Recycled polypropylene in white/grey, graphite, beige, dark red and blue green.

Seat pad Textile covered cellular rubber, 4 colors. Alt. upholstered seat or fully upholstered shell.

Options Felt glides. Teflon glides. Linking device. Seat pad. Trolley. Casters

H 78 SH 45

W 48/51/53/57 D 54



Grade chair & Grade Plus armchair with Funk table.

Grade Plus chair

With the armrest integrated into the shell, a timeless and generous model providing high comfort.



Design Johannes Foersom & Peter Hiort-Lorenzen

Frame 16 or 22 mm steel tubing, powder coated or chromium plated. Also with solid ash legs.

4-star swivel base 360°, with foot of cast recycled aluminum and pillar with 40 mm recycled aluminum cover. Glides.

5-star swivel base 360°, height adjustable, with foot of cast recycled aluminum and pillar with

40 mm recycled aluminum cover. Casters.

Seat shell Recycled polypropylene with integrated armrests in white-grey, graphite, beige, dark red or black.

Options Upholstered seat. Casters. Glides

H 80 SH 46

W 59/70 D 55/67



Grade Plus armchair with Ponto table.

Grade barstool

A strong expression and a clear identity

The concept is built around a softly shaped polypropylene shell with a molded relief pattern that follows the curves of the back and seat. The reliefs are very subtle, not affecting the seating comfort in any way but giving Grade a strong expression and a clear identity.

Design Johannes Foersom & Peter Hiort-Lorenzen

Frame 14 or 16 mm steel tubing, powder coated or chromium plated.

Seat shell Recycled polypropylene in white/grey, graphite, beige, dark red, blue and green.

Seat pad Textile covered cellular rubber, 4 colors. Alt. upholstered seat, partly upholstered inside, fully upholstered inside or fully upholstered shell.

Upholstery Fabric

Options Felt glides. Teflon glides.

H 99/112 SH 66/79
W 48/52 D 54/55



Grum-Schwensen, Troels



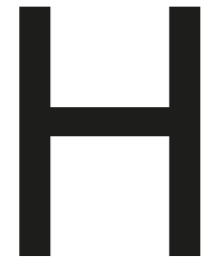
Troels Grum-Schwensen is educated as an Architect and designer from the Royal Danish Academy of fine Arts in Copenhagen. He works with buildings, interior- and furniture-design. His furniture is characterised by innovative, artistic interpretation of the construction, where gravity is cleverly exploited for locking and stabilizing.

The approach is the spaces and the humans living inside them. For that reason many of the furniture from Troels is designed with a high degree of flexibility and adaptability to fit into different rooms and architectural environments. The different angles and proportions are carefully adjusted, in a relationship with the function of the furniture, in order to achieve an airy, agile and balanced aesthetic. Inspirations are multifarious: The material itself, the springy movement of a cat, the stalk of a leaf, the light flight of a bird... Several furniture-designs from Troels have received design-prizes and Troels has, among other distinctions, got the 3-year-working-grant from the National Art-foundation of the Danish State.

Designs for Lamshults include: Attach, Detach, Ponto.



Ponto



Hiort-Lorenzen, Peter

Hiort-Lorenzen, Peter



Working as partners since 1977, Johannes Foersom and Peter Hiort-Lorenzen approached Lamshults in 1986 with the idea to cooperate in the creation of a new set of furniture designs for the international marketplace. Following the success of their first upholstered pieces, Peter & Johannes brought international acclaim to Lamshults with the Campus chair in 1992.

Guided by the principle that furniture must not dominate its surroundings, Peter Hiort-Lorenzen & Johannes Foersom set out to create strong, silent designs. As Peter explains: "The hardest part of our work is to reach the point where our designs are totally clear, the point where all the 'noise' is gone from the design." Light, precise and practical, the measure of success of the designs done by Peter & Johannes for Lamshults is in the extensive international design awards they have won. See also Foersom, Johannes

Designs for Lamshults include: Archal, Campus, Club, Funk, Grade, Portus, Quickly, Spira.

Campus



Quickly



Innovation Interiors

Innovation

Created some 25 years apart, the chairs Penne and Campus stand as examples of the innovation that is a hallmark for Lamshults. The idea to attach the back of a chair directly on the top of the steel tubing was novel. Making a chair's legs entirely of laminated wooden tubes was also unheard of. That was, until the designers Julia Läufer and Marcus Keichel started to work on what would turn out to be Penne, or Johannes Foersom and Peter Hiort-Lorenzen approached Lamshults with



Penne

their ideas for Campus, one of Lamshults' biggest successes to date. Two examples of our constant quest for new methods, new techniques and new thinking. It's hard work, but it's what we do. Innovation, constantly.



Campus

Interiors

We love furniture. But even more, we love seeing our products at use in beautiful surroundings.



Arta Foods Innovation Centre Aarhus, Denmark
Add stool



Banknordik Torshavn, Faroe Islands
Addit modular seating



SEB Stockholm, Sweden
Portus easy chair & sofa



Telenor HQ Stockholm, Sweden
Carousel armchair, Attach table

L

Lammhult, Sweden
Lindau & Lindekrantz
Läufer, Julia & Keichel, Marcus

Lammhult, Sweden

You might think that Lammhult is the name of a furniture brand. And you are absolutely right, it is. But Lammhult (without the s at the end) is actually a place. Our place. Our home. Lammhult (formerly Lamhult) is a small community in the municipality of Växjö, in the Småland region in the south of Sweden. We like to think that we are not in the middle of nowhere, rather right in the middle, between Stockholm, Göteborg & Malmö, Sweden's largest cities. And since København, the capital of Den-

mark is only a short ride over the bridge from Malmö, maybe we could argue that we are actually very close to Europe as well? Anyway, Lammhult is a small community, with about 1,500 residents. But since we are in the middle of 'Möbelriket' ('The Kingdom of Furniture'), Lammhult is the home to several furniture companies, with Lammhults being the largest one, and definitely oldest. So even though Lammhult and Lammhults are not one and the same, our lives are closely intertwined.



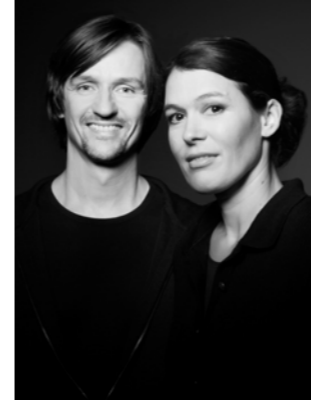
Lindau & Lindekrantz



By the early 1960s Lammhults was looking to expand its design identity, and in 1965 sales manager Kenneth Ståhl invited the well-known design partners Lindau & Lindekrantz. Lammhults asked Lindau & Lindekrantz to design a chair for public use. Instead of one chair, the designers offered two: Ritz and Royal. The chairs were the beginning of a long and fruitful collaboration that was to last for two decades. Lindau & Lindekrantz created scores of designs for Lammhults, establishing the company as a reference point for leading Scandinavian design. During Lammhults' collaboration with Börge Lindau and Bo Lindekrantz, a number of important furniture designs were developed. A collection of Lindau & Lindekrantz designs are still in production, for example the S70-3 barstool and X75-2 armchair.



Läufer, Julia & Keichel, Marcus



Julia Läufer was born in Freiburg in Germany. She studied fashion and textile design at St. Martin's School of Arts in London, and at Berlin University of the Arts.

Marcus Keichel was born in Frankfurt/Main. He studied industrial design, architecture and cultural studies at Berlin University of the Arts. Since 2016 Marcus is a professor for industrial design at HTW Dresden University of Applied Sciences.

They founded their Berlin based design studio Läufer + Keichel in 2003. Focusing on sustainable design solutions, their disciplines range from furniture design and industrial design, through exhibition to corporate and communication design. They have been collaborating with different European brands such as Avarte, Lapalma, Martela, Thonet, Offecct, Wilkhahn and Zeitraum.

Designs for Lammhults include: Aperi & Penne.



M

Mekanisk verkstad
Mini, barstool

Mekanisk verkstad

At the heart of the Lammhult legacy lies our origin as 'Lammhults Mekaniska Verkstad', or mechanical workshop. Ideas, brought to us from our designers, come to life in the workshop. And solutions to problems that might at first seem impossible see the light of day here, in very much the same way as when Lammhults Mekaniska Verkstad was just a small mechanical workshop with clients only in the near region and not, as today, all around the globe.



Mini barstool

A simple technical beauty.



Mini uses a seat of needle-punched felt carpet pressed together with textile in a formed shell. Mini is a welcome, lightweight barstool on a sled base.

Design Anya Sebton
Frame 11 mm solid steel, powder coated or chromium plated.
With plastic glides.
Footrest always in chrome.
Seat shell Molded needle felt carpet in polyester, with fabric Gloss black. Other fabrics available on request.

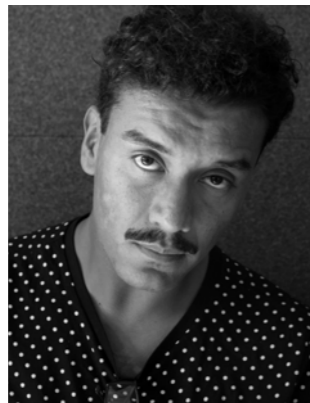
SH 78 W 50 D 46



N

Nilson, Andrés

Nilson, Andrés



"I'm not that digital in my design process, I like to build models, but at the same time I am very interested in the digital future. My sources of inspiration are mainly all the older masters. Especially the Danish designers strived for a totality between architecture and design, right down to the smallest door handle. What I love about design is that one thing can lead to the other and that a mistake can turn into something positive. It's a magical process. I jump a lot between different fields of working, I feel that I must stimulate both brain halves."

Andrés Nilson is a Swedish designer with a studio in Stockholm. He works in a very broad field ranging from graphic, product & industrial design to architectural projects and also teaches in digital art tools. Pure and clean lines characterize his design. He always strives to find the identity or the soul of the object, to tell a story or solve a problem with his designs. Andrés Nilson was one of five selected students in Lammhults' project 'X-Works 2.0' in 2015/2016.

Designs for Lammhults:
Teius modular seating.



Teius

P

Penne, chair
Planka, chair
Ponto, table
Portus, bench, easy chair & sofa
Prytz, Julia

Penne chair

Craftsmanship and technology meet in a unique concept.



Penne is the world's first chair with legs made of laminated wooden tubes. It combines the spirit of Scandinavian chair design with the requirements of the modern contract furniture market. With seat and back in polypropylene or molded ash, walnut or oak, the chair can meet a wide range of environments and areas of use. Furthermore, the Penne chair is also available with legs of powder coated aluminum tubes. In combination with seat and back in polypropylene it makes Penne suitable for outdoor use.

Design Julia Läuffer & Marcus Keichel
Frame 35 mm tube of ash, oak or walnut alt. stained ash. Alt. frame of 35 mm aluminum tube, powder coated. Glides.
Seat & back White, grey or black polypropylene with matching rim in polyamide. Alt. seat and back of molded ash, oak, walnut or stained ash with white, grey or black rim.
Armrest White, grey or black polyamide.
Stackable incl. stacking protection. Linkable chair-chair alt. chair-armchair.
Options Felt glides. Teflon glides. Linking device. Flipshelf storage.

Planka chair

Standing in the borderland between art and design.

According to the legend, Lammhults designer Börge Lindau spotted a washed up plank stuck in the sand as a backrest and his rolled up towel as a headrest. This inspiration fed the design of the Planka chair in which there is no departure of form from function. Planka has a full 360° swivel and an adjustable headrest. All that's missing is the beach.



Design Börge Lindau & Bo Lindekrantz
Back Lacquered wood alt. upholstered in black or natural coach hide leather.
Seat Perforated sheet metal or upholstered in black or natural coach hide leather.
Neck Cushion in leather or fabric.
Foot plate Powder coated steel. Swivel base.

H 106-120 SH 42
W 42 D 70

Ponto table

Exclusivity and simplicity defined.

Ponto, meaning bridge in Esperanto, is the table that allows modern technology to meet solid craftsmanship. The legs of Ponto are made of carefully selected solid wood that is milled to fit the aluminum profiles that support the entire table.

Nothing on Ponto is unnecessary, with a maximum length of 558 cm, only four legs and table surfaces are all that is needed, no more no less, together they are whole and that is remarkable in its simplicity. Assembly is quick, by sliding the leg onto the aluminum profile to the desired position.

Design Troels Grum-Schwensen
Legs Solid wood: natural ash, or walnut alt. stained ash.

Frame Extruded recycled aluminum.
Tabletop 28 mm wood fibre board in:
Veneer: natural ash/oak, stained ash or walnut with matching wooden edge.
Linoleum: Nero or Iron with a wooden edge in dark smoked oak. Additional deviating wooden edge in oak, ash, or walnut at an additional cost.
Options Deviating edge for linoleum table top.
Legs in walnut (when combined with linoleum top).
Power and communication ports.

H 74 L max 558
W 100/120/140
Ø 160/180



Ponto table with Archal XL armchair and Portus easy chair.

Portus bench, easy chair & sofa

A gracious architectural family with a clear visual identity.

The Portus seating series offers many possibilities – a stopping point, a meeting point, a relaxing space or a sharing space – all created by the combination of three simple elements: a soft sculptural bench, an ergonomic support cushion alternatively decoration pillows, and a shapely back.

Design Johannes Foersom & Peter Hiort-Lorenzen

Legs 35 mm steel tubing, powder coated or chromium plated alt. natural or stained ash. Glides.

Seat Frame of massive wood and molded high resilient polyurethane foam.

Back Molded wood and high resilient polyurethane foam incl. quilting on the outside.

Back cushion High resilient polyurethane foam alt. decoration pillows. When upholstered in 2 colors the back cushion follows the color of the seat.

Upholstery Fabric. Back in leather, imitation leather or patterned fabrics are not available. Seat and cushion in these materials on request.

Bench:

H 42 L 82/137/212 D 74/75

Easy chair:

H 79/132 SH 42

L 99/104 D 83/85

Sofa:

H 79/132 SH 42

L 155/160/230 D 83/84/85



Prytz, Julia



"Technology and materials are fun, but I truly love working with design. I'm not scared to go all out, and I'm drawn to organic designs and bright colours. I want to be generous with colour and design even when I work with furniture for public environments".

Designs for Lammhults:
Deco table.



Quickly, table

Quickly table

Hard work on the go.



The Quickly table is a model of efficiency, with a compact folding construction using a quick-lock mechanism for simplicity, safety and stability. Quickly is available with either T-leg or mitre-welded folding leg assemblies and different types of tops, Flexible and Basic, both in several sizes. Quickly is built for speed. One person can erect or stow tables with ease, using the patented mechanism. Accessories include linking devices, modular quarter-round linking tops, modesty panels, and a ten-table trolley for moving folded tables. Quickly makes short work of the hard office and conference assignments.

Design Johannes Foersom & Peter Hiort-Lorenzen

Frame 30 mm welded conical steel tubing, powder coated or chromium plated. Foldable.

Table top Flexible: 25 mm poplar plywood with white/grey, high pressure laminate & light grey plastic edge. Alt. birch veneer & solid wooden edge.

Some sizes also in ash veneer & light grey plastic edge.

Basic: 22 mm MDF with white/grey melamine & matching 2 mm plastic edges.

Alt. ash decor & 2 mm light grey plastic edge.

Options T-leg. Linking device. Wall hanging device. Wheels (not for T-leg). Trolley. Modesty panel. Black fittings and feet.

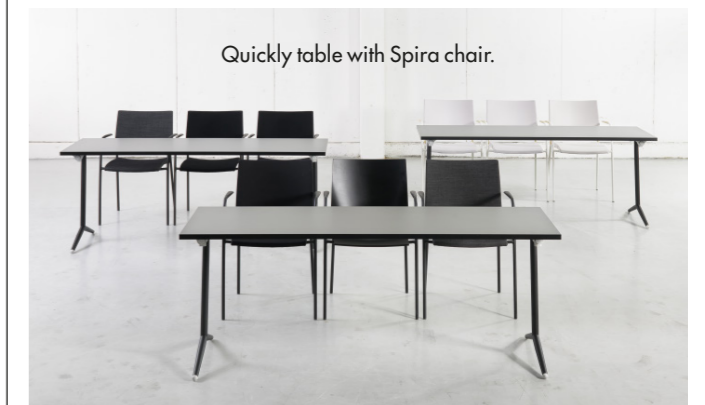
H 72

W 50 L 120/140

W 60 L 120/140/180

W 70 L 120/140/180

W 80 L 120/140/160/180



Quickly table with Spira chair.

R

Recycling
Rivedal Tjugen, Tuva

Recycling

At Lammhults we work with timeless designs of the highest quality to ensure the longest product life. In order to reduce the consumption of resources and lessen our environmental impact we start working with these topics early in the product development process. Development of new products shall be characterized by a circular approach and be designed to enable the reuse and recycling of materials. Furthermore, the products we design should, to the maximum extent possible, be produced from materials that are recycled and can be recycled. In parallel we work continuously to adapt the existing product range to this design strategy.



Rivedal Tjugen, Tuva



"In my design, I am inspired by nature and the human. I work with clean forms in simple design where the materials are allowed to come into their own. I'm also captivated by storytelling, it's important for me to have a clear story and goal. The aim of my design is to reduce stress, build security and relationships, contribute to a better work position, streamline everyday life and work for better use of resources.

It's interesting to work with work environments and offices, it's a big arena where you can influence people and contribute with something good. My motivation is to help out in various ways".

Designs for Lammhults:
Boss & Mini Boss waste paper bin.



S

S18, table
S70-3, barstool
S70-4, easy chair
S70-5, sofa
S70-12, coat stand
Sebton, Anya
Shop floor
Showrooms
Spira, chair
Stand-By, hanging bar
Ståhl, Edvin
Sustainability

S18 table

Playful, clean and clear functional design.



With homage to Lammhults' successful S70 series from the 1960s, Anya Sebton's S18 table series flirts with oversized steel tubing dimensions and play of colors. Several table top shapes, table top materials, different heights and frame in chrome or 30 different powder coat colors allow creating a design that perfectly matches your needs.



Design Anya Sebton
Frame 36 mm steel tubing, powder coated or chromium plated. Adjustable glides.
Top 22 mm wood fibre board in: Melamine: white, with matching plastic edge. Anti Fingerprint Melamine: Perfect Sense black matt, with matching plastic edge. High Pressure Laminate: Formica

Color Collection with matching edge.
Linoleum: Forbo Furniture with matching edge.
Options Power and communications ports.

H 74/90 Ø 90/110
H 110 Ø 90/110
H 74 W 90/110
L 160/220/260/320/400

S70-3 barstool

A perfect blend of pop culture and modernist clarity.



The S70 collection was launched in 1968, and it originally included 12 items, ranging from ashtrays and coat hangers to tables and chairs. The commanding design element of the series, both visual and structural, was its large-diameter tubing in steel, which gave the series its name. This feature, a radical departure from thin tubing much in vogue, plus a range of bold colors brought instant global recognition to the series and to Lammhults. The S70-3 stool remains the fresh face of Lammhults design, decade after decade.

Design Börge Lindau & Bo Lindekrantz
Frame 32 mm steel tubing, powder coated or chromium plated. Footrest always in chrome.
Seat Plywood with birch veneer alt. lacquered in black or white. Upholstered seat. Stackable.
Upholstery Fabric/leather



S70-4 easy chair & S70-5 sofa



The S70 collection was launched in 1968, and it originally included 12 items, ranging from ashtrays and coat hangers to tables and chairs. The commanding design element of the series, both visual and structural, was steel tubing, which gave the series its name. The large diameter of the tubing was a radical departure. This feature plus a range of bold colors brought instant global recognition to the series and to Lammhults. The easy chair and sofa, reintroduced in 2012, were logical extensions of the S70 family, offering plush upholstered comfort in a compact size.

Design Börge Lindau & Bo Lindekrantz
Frame 35 mm steel tubing, powder coated or chromium plated. Glides.
Cushions High resilient polyurethane foam.
Upholstery Fabric/leather

H 81 SH 42 W 62/117 D 62

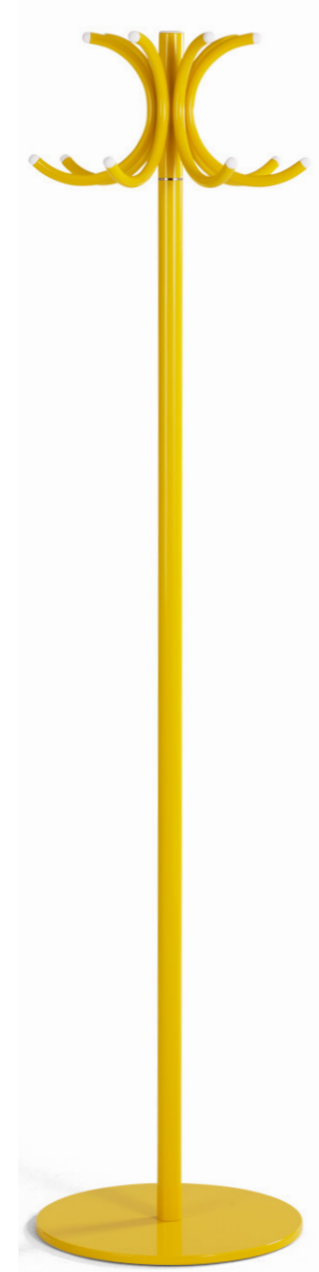


S70-12 coat stand

S70-12 coat hanger became a standard fixture in homes and offices in the 1960s and '70s. Its dramatic style and easy spinning top function make it a practical, good sense solution.

Design Börge Lindau & Bo Lindekrantz
Frame 35 mm steel tubing, powder coated.
Foot Steel, powder coated.
 Rotating top with 7 hooks.

H 170 Ø 40



Sebton, Anya



Anya Sebton started working with Lammhults directly after graduating from Beckmans College of Design in Stockholm.

"Functional Identity is the key theme in my work. Design is about combining aesthetic values together with functional and technical needs to create a unique product. To find a need or a new function for a new product that can be an addition to the existing collection."

Anya's work as an interior architect gave her an insight into the demands from clients and their requirements of a successful interior. Combined with her collected educational experiences, this has produced a well-rounded artistic and functional approach to furniture design. Anya's designs offer unexpected details and a further characteristic is that they have a unique graphic expression.

Designs for Lammhults include: Add-series, A-line, Addit, Area, Area Radius, Mini, S18.

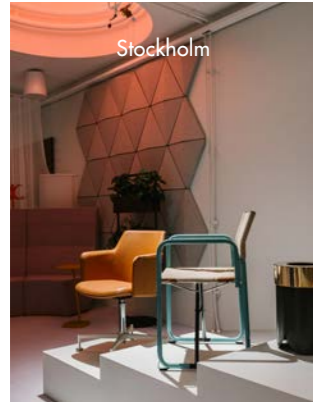


Shop floor

In 1985, acclaimed photographer Nina Ericson spent time with the people working on the shop floor in the Lammhults factory. The resulting images, testament to the skill and knowledge important for the successes of Lammhults, are just as relevant today.

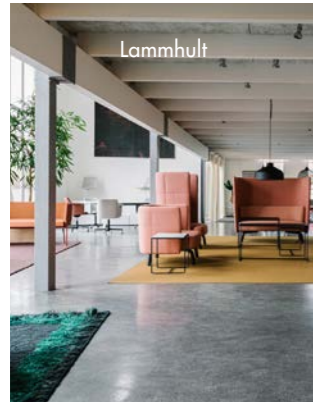


Showrooms



Stockholm

Our showrooms, in Lammhult, Stockholm, Copenhagen, Oslo, London, Paris etc, are of course places for showing our products in a variety of inspiring settings. But also: for feeling, trying, touching, using and of course, for talking about furniture. We are here for you, for all your questions, demands or special requests. Feel free to come by!



Lammhult



Oslo

Spira chair

Conference chair comfort for the masses.

Spira is all about comfort in a chair for large installations. The designers explain: "Our primary approach was to the issue of comfort. When you want to make a comfortable chair, you also have to make it look comfortable. Of course it is easy to give the illusion of comfort with big soft cushions or upholstery. With Spira, the comfort image is its shape. We knew it had to be an upholstered chair but still usable as a volume chair, with volume chair features, like linking and stacking." Spira adds flexibility to its comfort performance. The separate back connects to the seat frame with two spring steel inserts that allow seven degrees of back deflection. Sit in Spira, lean back and relax.

Design Johannes Foersom & Peter Hiort-Lorenzen
Frame 18 mm steel tubing, powder coated or chromium plated. 4-foot swivel base, 360°, with glides. 5-foot swivel base, 360°, with casters in chrome.
Back Spring steel. Natural ash, birch or oak alt. stained. Upholstered. Black polyurethane.
Seat Upholstered with high resilient polyurethane foam. Black polyurethane.
Armrest Dark or light Woodfibre. Stackable incl. stacking protection. Linkable.
Upholstery Fabric/leather
Options Rubber glides. Felt glides. Linking device. Trolley. Lap-top working surface (armchair). Quilted back & seat.

H 83 SH 45
 W 51/55/57/61 D 56/58



Stand-By hanging bar

Storage at hand.



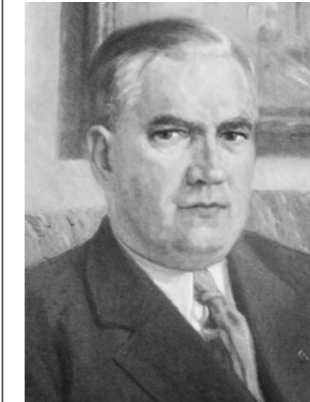
Stand-By is a strong, functional system for the ready storage of coats and clothing. Stand-By combines materials according to the requirements of their use and according to the maximum efficiency possible in production. Each material perfectly suits its needs.

Design Ruud Ekstrand
Frame Hanging bar of aluminum.
Hooks ABS-plastic, lacquered in white, black, grey or red.

H 9 L 22/40/76



Ståhl, Edvin



Lammhults' founder, Edvin Ståhl, was born 1896 in the Swedish village of Lammhult and had an early interest in furniture design.

Already back in the late 20s he and his brothers started a furniture industry with focus on furniture for both home and office environments. This company was then sold on to KF (Sweden's Cooperative Society) but Edvin continued to lead it for a long time. Alongside this, in 1945, Edvin started a small mechanical workshop, Lammhults Mekaniska Verkstad AB, which produced fittings and other details to the local furniture industries. When Edvin after about ten years began designing and producing furniture in the workshop the company was renamed Lammhults Möbel AB.

The first piece that was produced was a simple stool called 282, and a chair series named Pyramid. Both had frames of bent steel tubing. This was the beginning of Lammhults' development from a subcontracting company to becoming a pure furniture producer. Edvin wanted that both the stool and chair should be practical, timeless and above all have a clear and simple design. Still today Lammhults work with these key words in the design process.

In honor of the pioneer Edvin and his work Lammhults relaunched the stool, now called Taburett, from Edvin's original 282 in 2014.

Sustainability

Lammhults' environmental work shall be conducted in a long-term and preventative way and contribute to the sustainable development of our surroundings. This should be done by keeping house of both renewable and finite raw materials as well as energy. Furthermore, all environmental impact in the form of, for example, pollutant emissions and waste must be minimized. Our goal is not only to meet the authorities' minimum requirements, but with a good margin, as far as possible,

exceed set requirements. We strive and work systematically to produce in all processes with regard to the environment and people. It is important that we get it right from the start and that we have focus on sustainability issues throughout the entire product life cycle, from early in the product development process until the day the product may need to be renovated or recycled.



T

Taburett, stool
Teius, modular seating
Timeline

Taburett stool

Structure and function revealed simultaneously.

Taburett is a welcome reissue of one of Lammhults' earliest products, the 282 stool, designed by founder Edvin Ståhl. A true industrial masterpiece, Taburett wears its modernist mantle well.

Design Edvin Ståhl
Frame 16 mm steel tubing, powder coated or chromium plated. Glides.
Seat White, grey, black, red or orange ABS plastic alt. upholstered. Embossed seat detail of powder coated or chromium plated die-cast zinc. Stackable.

H 45/63/78 Ø 46/48



Teius modular seating

The Teius concept took form in the challenge to combine function, perfection and flexibility. Versatility and adaptability combined with its many areas of use are the strengths and core of Teius modular seating. The starting point of a stand-alone bench can, by connecting several benches and adding backs, tables, armrest etc. be turned into a long winding seating solution optimized for a specific environment. Play with different colors on seats and backs or make a monochrome statement. Different settings require different configurations. Teius' pure and clean lines and its variety of options and attributes make it suitable in all kind of environments.

Design Andrés Nilson
Base Pillar base of 30 mm steel tubing, texture powder coated. Foot of cast aluminum, texture powder coated. Profiles in extruded aluminum.
Seat & back Plywood with high resilient polyurethane foam.
Upholstery Fabric/leather
Options Polished aluminum foot.



Armrest, texture powder coated.
Armrest with raising aid, texture powder coated.
Connecting table in black compact laminate with texture powder coated arm, square, 60° or 90°.
Stand table, birch veneer with texture powder coated frame.
Side table Ø30cm black compact laminate with texture powder coated arm. Linking device back to back. Wall spacer. Floor anchor.
Power and charging ports: 1+1 power outlets Schuko standard, 1 power outlet Schuko standard + 2 USB or 2+2 USB.



Timeline

1896 Lammhults founder Edvin Ståhl is born in Lammhult, a small village in the south of Sweden.
1926 Edvin Ståhl, together with his brothers, founds a small company producing furniture for both home and office environments.



1945 Edvin Ståhl founds Lammhults Mekaniska Verkstad with his brother-in-law. Due to the strong quarantine rules, he cannot produce any furniture, instead focusing on metal pieces, such as knobs and handles.



1955 The company's first piece of furniture is produced, the stool 282. Later the same year, it is followed by a chair called Pyramid. Pyramid is a success, and marks the beginning of Lammhults' development from a subcontracting company to becoming a pure furniture producer.
1965 Edvins Ståhl's nephew, Kenneth Ståhl, joins the company as sales manager. He will be a key figure in Lammhults' transformation over the years.



1965 The furniture designers Börge Lindau & Bo Lindekrantz have their first meeting with Lammhults and Kenneth Ståhl. They are already quite known,

having made their name with the design of Form/Design Center in Malmö. At their suggestion, Lammhults starts production of not one, but two chairs, Ritz and Royal.



1968 The new factory is inaugurated. It has an area of 4,000m².
1971 Edvin Ståhl dies. Kenneth Ståhl takes his place as the company's CEO.
1982 Lammhults is sold to the investment company Hexagon.
1986 Lammhults Mekaniska Verkstad is no more. Lammhults Möbel is the new name of the company.



1986 The Danes Johannes Foersom and Peter Hiort-Lorenzen approach Lammhults, wanting to cooperate on new furniture.
1988 'Lammhults X-Works' with new designers is presented in Milan and at the Röhsska Museet in Gothenburg. One of the young designers is Gunilla Allard, who now begins a long, successful journey with Lammhults. She is the first female designer at Lammhults, but surely not the last.



1992 Johannes Foersom's and Peter Hiort-Lorenzen's chair Campus is introduced at the furniture fair in Stockholm. It will turn out to be one of the company's largest successes to date.
1994 Cinema easy chair and

sofa, designed by Gunilla Allard, are introduced. Cinema shows that Gunilla Allard is a true designer and it turns her into a household name, two years later resulting in the Georg Jensen prize.
1995 Lammhults turns 50 and reaches a turn-over of SEK 100 million.



1998 Having recently graduated from Beckman's school of Design, Anya Sebton joins Lammhults. Over the years, she will leave a firm mark on the collection, starting with the easy chair Multiplicity.
2008 Lammhults majority owner Expanda changes their name to Lammhults Design Group.
2012 The Lindau & Lindekrantz icons S70-4&5 are reintroduced, to the joy of younger generations.
2015 Once again, Lammhults arranges 'X-Works', five hopeful students get to work with their designs at Lammhults' factory.



2016 The world's first chair with legs made of laminated wooden tubes, Penne, designed by Julia Läuffer and Marcus Keichel is launched. It is awarded the 'Red Dot' in 2017.
2017 Attach table, with its unique construction, wins award after award. Designer Troels Grum-Schwensen no doubt is pleased.
2020 Lammhults celebrates that 75 years ago Edvin Ståhl founded a company that has grown in size and prominence in a way that would make him proud. Here's to the next 75!

X

X75-2, chair

X75-2 chair

A classic true to any era.

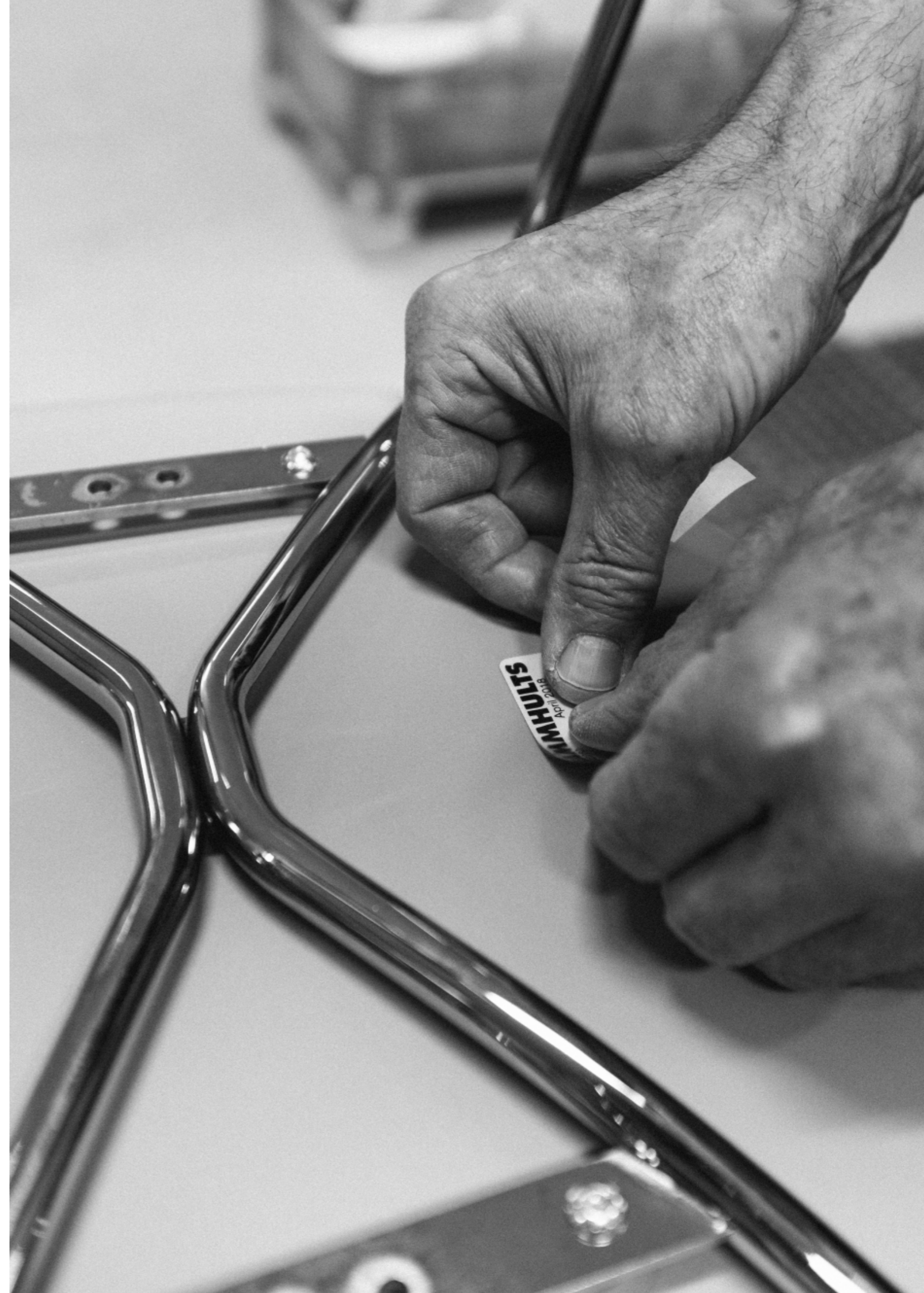
Lammhults' early collaboration with the designers Börge Lindau and Bo Lindekrantz lead to many successful products. The second product group, named X75, was introduced in 1972. Many of the pieces could be folded, such as the timeless X75-2, with steel tube frame and canvas seat and back. The practical nature of folding furniture which allowed more compact living became an embellishment to the playful stylistic nature of Lindau & Lindekrantz' designs.

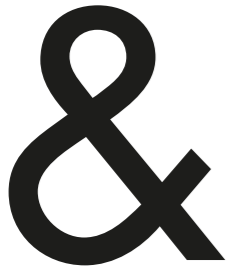
Design Börge Lindau & Bo Lindekrantz

Frame 25 mm steel tubing, powder coated or chromium plated. Cross tubing always powder coated in black.

Seat & back Canvas; black, white, grey, beige or blue. Seat with reinforcements in matching leather. The chair is foldable.

H 80 SH 45 W 53 D 51





Colors
Materials
Eco-labelled products

The printed color samples displayed here may vary from the finished product. Please contact us for samples.

Powder coats



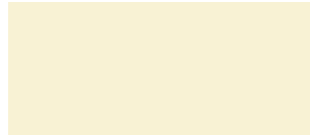
890
RAL 9016
White matt



892
RAL 9010
White



895
RAL 9002
White/grey



893
NCS S 0505-G90Y
Eggshell



862
NCS S 2005-G70Y
Khaki



840
NCS S 4005-Y20R
Beige



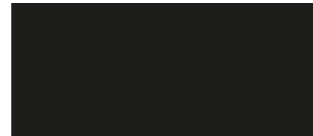
872
NCS S 5000-N
Grey



870
Aluminum color



876
RAL 7022
Graphite



800
NCS S 9000-N
Black



810
RAL 1003-GL
Yellow



811
RAL 2000
Yellow orange



830
RAL 3000-GL
Red



832
NCS S 4050-Y90R
Dark red



807
RAL 3007
Black red



852
NCS S 4020-B50G
Blue green



850
RAL 5003
Blue



806
RAL 5004
Black blue



860
RAL 6001-GL
Green

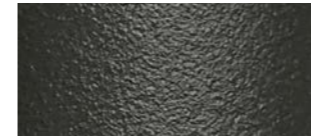


879
RAL 6006
Olive grey

Texture
powder coats



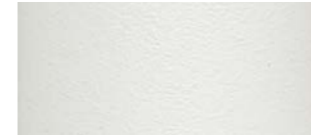
801
RAL 9005
Black



875
NCS S 8000-N
Graphite



891
RAL 9002
White/grey



894
RAL 9016
Snow white



878
Zinc



853
RAL 5014
Dove blue



812
RAL 1032
Broom yellow

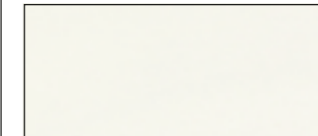


841
RAL 8014
Brown sepia

Stain colors



20
Black



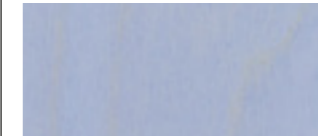
431
White



605
Orange



606
Cinnober



608
Dove blue



609
Grey



611
Brown



612
Grey blue



614
Anthracite



440
White/grey (Funk)



475
Graphite (Funk)

Veneer



Birch



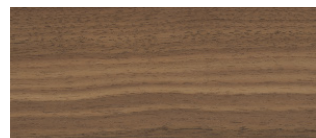
Beech



Oak



Ash



Walnut

Melamine



RAL 9002
White/grey



NCS S 0502-Y
White



Ash decor



NCS S 8000-N
Graphite



NCS S 9000-N
Black PerfectSense Matt



RAL 9002
White/grey (Funk)

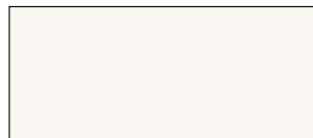


NCS S 8000-N
Graphite (Funk)

High pressure laminate



NCS S 1000-N
White/grey



NCS S 0502-G50Y
White high gloss

Compact laminate

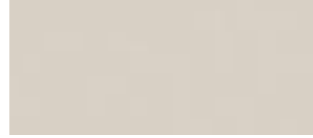


NCS S 0502-G
White, black edges



NCS S 8502-B
Black, black edges

Linoleum



4176
Mushroom



4166
Charcoal

Accoya



Natural



Dark oiled

Elmo Nordic leather



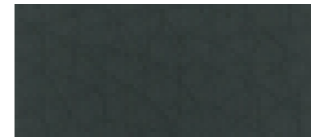
00105
White



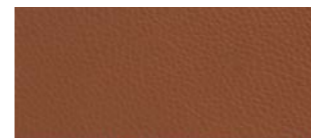
00385
Eggshell



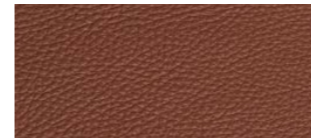
11386
Dark grey



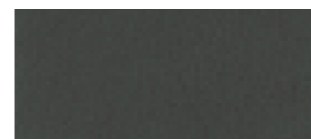
99008
Black



43404
Light brown



53374
Brown



93009
Dark brown

Elmo Rustical leather



99991
Black



93327
Dark brown



53069
Brown

Campus Air seat & back



NCS S 1000-N
White



NCS S 9000-N
Black



NCS S 3500-N
Light grey



NCS S 6000-N
Grey



NCS S 4020-B50G
Blue green



NCS S 5030-R90B
Dark blue



NCS S 2070-Y50R
Orange



NCS S 3060-Y90R
Red

Grade
seat & frame



895
RAL 9002
White/grey



876
NCS S 8000-N
Graphite



840
NCS S 4005-Y20R
Beige



852
NCS S 4020-B50G
Blue green

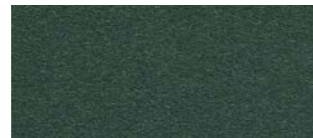


832
NCS S 4050-Y90R
Dark red

Grade
seat pads



Divina 224



Divina 886



Divina 384



Divina 691

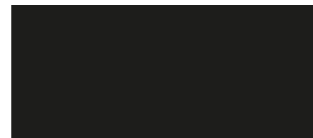
Grade Plus
seat & frame



895
RAL 9002
White/grey



876
NCS S 8000-N
Graphite



800
NCS S 9000-N
Black



840
NCS S 4005-Y20R
Beige



832
NCS S 4050-Y90R
Dark red

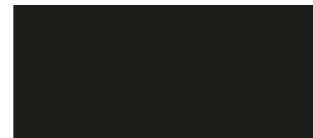
Penne
plastic seat & back



NCS S 0502-Y
White



NCS S 3502-Y
Grey



NCS S 9001-G
Black

Stand-By
hooks



Black



Grey



Red



White

Taburett
seat & frame



NCS S 1000-N
White



NCS S 9000-N
Black



NCS S 3500-N
Grey



NCS S 2070-Y50R
Orange



NCS S 3060-Y90R
Red

X75-2
seat & back



Black



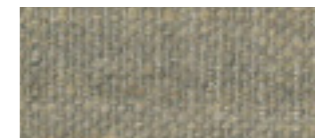
Grey



Blue



White

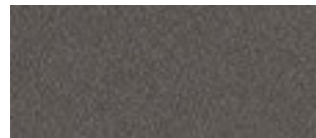


Natural linen

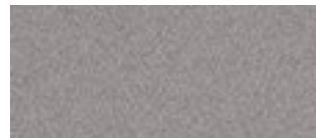
Detach screen



Dox 50



Dox 51



Dox 52



Dox 53



Camira Blazer Cuz1e



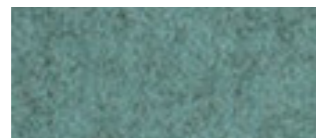
Camira Blazer Cuz1n



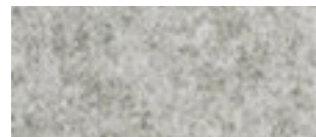
Camira Blazer Cuz1w



Camira Blazer Cuz30



Camira Blazer Cuz33



Camira Blazer Cuz28



Salsa 30



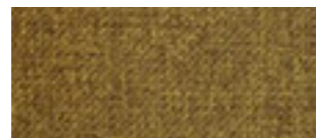
Salsa 31



Salsa 32



Salsa 33



Salsa 34



Salsa 35



Salsa 36



Salsa 39



Salsa 40

Möbelfakta



Add, Add Move & Add Work, chairs
Fully upholstered in fabric approved according to the EU Ecolabel or Oeko-tex standard.

Add, Add Move & Add Work, stools
Without back, seat in polyurethane or upholstered in fabric approved according to the EU Ecolabel or Oeko-tex standard 100.
With back, back must be upholstered in fabric approved according to the EU Ecolabel or Oeko-tex standard.

Add, table

Add, accessories

Addit, modular seating
Frame powder coated and upholstered in fabric approved according to the EU Ecolabel or Oeko-tex standard (excl. foot stools).

Aperi, easy chair & sofa
Upholstered in fabric approved according to the EU Ecolabel or Oeko-tex standard.

Archal, chair & armchair
Fully upholstered in fabric approved according to the EU Ecolabel or Oeko-tex standard.

Archal T&X, table
Top in birch decor, white/grey or graphite melamine, linoleum or high pressure laminate Formica Collection Colors.

Area & Area Radius, modular seating
Upholstered in fabric approved according to the EU Ecolabel or Oeko-tex standard. Excl. easy chair and footstool 60°.

Attach, table
Table top in white/grey melamine, white high pressure laminate or linoleum.

Cajal, easy chair & sofa
Upholstered in fabric approved according to the EU Ecolabel or Oeko-tex standard.

Cajal, table
Table top in linoleum or Carrara marble.

Campus, chair & armchair
Seat and back in natural birch or oak or stained birch (excl. black) and with upholstered seat or fully upholstered in fabric approved according to the EU Ecolabel or Oeko-tex standard.

Campus Air, chair & armchair
(excl. orange)

Campus, barstool
Natural birch or oak or stained birch (excl. black) and with upholstered seat or fully upholstered in fabric approved according to the EU Ecolabel or Oeko-tex standard.

Campus, table
Table top in melamine.

Carousel, chair
Upholstered in fabric approved according to the EU Ecolabel or Oeko-tex standard.

Chicago, trolley
Shelves in compact laminate.

Cinema, easy chair
Upholstered in fabric approved according to the EU Ecolabel or Oeko-tex standard.

Club, easy chair
Upholstered in fabric approved according to the EU Ecolabel or Oeko-tex standard.

Comet, chair & armchair
Comet XL, chair & armchair
5-foot swivel base incl. casters. Upholstered in fabric approved according to the EU Ecolabel or Oeko-tex standard. Armrests must be powder coated.

Comet Sport, chair
Upholstered in fabric approved according to the EU Ecolabel or Oeko-tex standard. Armrest must be powder coated. Excl. black stained wooden legs.

Comet Sport, barstool
Upholstered in fabric approved according to the EU Ecolabel or Oeko-tex standard.

Cooper, table
Table top in compact laminate.

Dexter, stool

Funk, table
Aluminum frame and top in melamine (white/grey or graphite).

Grade, chair & armchair
Armrests must be powder coated. Excl. black stained wooden legs. If with upholstered seat or fully upholstered, fabric needs to be approved according to the EU Ecolabel or Oeko-tex standard.

Grade, barstool
If with upholstered seat or fully upholstered, fabric needs to be approved according to the EU Ecolabel or Oeko-tex standard.

Penne, chair
Legs of natural or stained (excl. black stain) ash or oak.

Ponto, table
Table top in linoleum or Formica Collection Colors. Legs in solid ash, natural or stained (excl. black).

Portus, bench, easy chair & sofa
Steel legs and upholstered in fabric approved according to the EU Ecolabel or Oeko-tex standard.

Quickly, table
Table top 'Basic' with melamine or 'Flexible' with high pressure laminate.

S70-3, barstool
Seat in natural birch or upholstered in fabric approved according to the EU Ecolabel or Oeko-tex standard.

S70-4, easy chair
S70-5, sofa
Frame powder coated. Upholstered in fabric approved according to the EU Ecolabel or Oeko-tex standard.

S70-12, coat stand

Spira, chair & armchair
On 4 legs or swivel base with wooden back of natural or stained (excl. black stain) birch or oak in combination with upholstered seat or fully upholstered in fabric approved according to the EU Ecolabel or Oeko-tex standard.

Nordic Eco-label



Archal, chair & armchair
Upholstered in fabric approved according to the EU Ecolabel or Oeko-tex standard.

Archal T, table
Top in birch decor, white/grey or graphite melamine or high pressure laminate Formica Collection Colors.

Campus, chair & armchair
4 legs, powder coated in standard color with seat and back in natural birch or oak and with upholstered seat or fully upholstered in fabric approved according to the EU Ecolabel or Oeko-tex standard.

Campus, chair
Sledbase, powder coated in standard color with seat and back in natural birch or oak and with upholstered seat or fully upholstered in fabric approved according to the EU Ecolabel or Oeko-tex standard.

Funk, table
Table top in white/grey or graphite melamine.

Grade Plus, chair
If with upholstered seat, fabric needs to be approved according to the EU Ecolabel or Oeko-tex standard.

Quickly, table
Powder coated frame (excl. T-leg). Table top 'Basic' with melamine or 'Flexible' with high pressure laminate.

S70-12, coat stand

Spira, chair & armchair
4 legs, powder coated in standard color with upholstered seat in combination with wooden back of natural or stained (excl. black stain) birch or oak alt. fully upholstered in fabric approved according to the EU Ecolabel or Oeko-tex standard.

Add, chair & stool 4
 Add Move, chair & stool 4
 Add Work, chair & stool 4
 Add, table 5
 Add Cable Table 5
 Add, coat hanger 5
 Add, storage rack
 & magazine rack 5
 A-Line, modular seating 6
 Addit, modular seating 6
 Allard, Gunilla 7
 Aperi, easy chair & sofa 7
 Archal, chair 8
 Archal XL,
 chair & easy chair 9
 Archal T&X, table 9
 Area, modular seating 9
 Area Radius,
 modular seating 9
 Attach, table 10
 Attach Outdoor, table 11

 Boss & Mini Boss,
 waste paper bin 11

 Cajal, easy chair & sofa 12
 Cajal, table 12
 Campus, chair 13
 Campus, barstool 13
 Campus Air, chair 13
 Campus Air, barstool 13
 Campus, table 13
 Campus Café, table 14
 Cargo, trolley 14
 Carousel, chair 14
 Chicago, easy chair & sofa 15
 Chicago, trolley 15
 Cinema, easy chair & sofa 15
 Club, easy chair 16
 Color choices 16
 Comet, chair 16
 Comet Sport, chair 17
 Comet Sport, barstool 17
 Comet XL, chair 17
 Comet XL lounge,
 easy chair 17
 Cooper, table 18
 Craftsmanship 18

 Deco, table 19
 Design 19
 Detach Workstation & Unit 20
 Dexter, stool 20

 Eco-labelling 21

 Foersom, Johannes 21
 Funk, table 22

 Grade, chair 22
 Grade Plus, chair 23
 Grade, barstool 24
 Grum-Schwensen, Troels 24

 Hiort-Lorenzen, Peter 25

 Innovation 25
 Interiors 25

 Lammhult, Sweden 26
 Lindau & Lindekrantz 26
 Läufer, Julia &
 Keichel, Marcus 27

 Mekanisk verkstad 27
 Mini, barstool 27

 Nilson, Andrés 28

 Penne, chair 28
 Planka, chair 29
 Ponto, table 29
 Portus, bench, easy chair &
 sofa 30
 Prytz, Julia 30

 Quickly, table 31

 Recycling 32
 Rivedal Tjugen, Tuva 32

 S18, table 33
 S70-3, barstool 33
 S70-4, easy chair 34
 S70-5, sofa 34
 S70-12, coat stand 34
 Septon, Anya 35
 Shop floor 35
 Showrooms 36
 Spira, chair 36
 Stand-By, hanging bar 37
 Ståhl, Edvin 37
 Sustainability 37

 Taburett, stool 38
 Teius, modular seating 38
 Timeline 39

 X75-2, chair 40

 Colors & materials 42
 Eco-labelled products 49

Art direction & design
 Cjhdesign
 Photography
 Nina Ericson, Mikkel Mortensen,
 Sam Sylvén, Pelle Wahlgren,
 Pia Ulin & Lammhults' archive
 Photography, cover
 Mikael Strinnhed
 Printing
 Åtta45
 Pre-press
 Linjepunkt