

Product information

A fabric of intoxicating natural beauty, Hemp is a heady mix of nature's cleverest renewables. The fabric is an intimate blend of wool and hemp in 31 naturally inspired shades with a soft handle, inherent flame retardancy and an exceptional eco story.

Hemp is certified to the EU Ecolabel.



Technical information

UK

Composition

60% Virgin Wool,
40% True Hemp

Environmental

Rapidly renewable and compostable.
Certified to the EU Ecolabel.

Width

140cm minimum

Weight

460g/m² ±5% (645g/lin.m ±5%)

Abrasion Resistance

5 year guarantee / 50,000 Martindale cycles (full details available)

Flammability

BS EN 1021 - 1:2014 (cigarette)
BS EN 1021 - 2:2014 (match)
BS 7176:2007 Low Hazard
BS 5852:2006 Section 4 Ignition Source 5
BS 7176:2007 Medium Hazard
Note: Flammability performance is dependent on foam used.

Light Fastness

5 (ISO 105 - B02:2014)

Fastness to Rubbing

Wet: 3, Dry: 4 (ISO 105 - X12:2002)

Cleaning

Vacuum regularly. Professionally dry clean or wipe clean with a damp cloth.

Please note that seam performance is dependent on seam construction and needle and thread type. We recommend that appropriate sewing advice be taken.

Note: Batch to batch variations in shade may occur within commercial tolerances. We reserve the right to alter technical specifications without notice. The Unregistered Design Rights and the Copyright in all designs are the exclusive property of Camira Fabrics Limited.

D

Zusammensetzung

60% Schurwolle,
40% Echter Hanf

Umweltfreundlich

Schnell erneuerbar und kompostierbar.
Nach Zertifikat EU Ecolabel.

Breite

140cm nutzbare Breite

Gewicht

460g/m² ±5% (645g/lfd.M ±5%)

Scheuerfestigkeit

5 Jahre Garantie / 50,000 Martindale Scheuertouren (Details auf Anfrage)

Feuersicherung

BS EN 1021 - 1:2014 (Zigarettentest)
BS EN 1021 - 2:2014 (Streichholztest)
BS 7176:2007 Low Hazard
BS 5852:2006 Section 4 Ignition Source 5
BS 7176:2007 Medium Hazard
Bemerkung: Schwerentflammbarkeit hängt von verwendetem Schaum ab.

Lichtechtheit

5 (ISO 105 - B02:2014)

Reibecktheit

Nass: 3, Trocken: 4 (ISO 105 - X12:2002)

Reinigung

Regelmässig absaugen. Professionelle Trockenreinigung. Alternativ dazu mit einem feuchten Tuch abwischen.

Eine optimale Nahtausreissfestigkeit hängt von der Nahtfahne, der verwendeten Nadel und dem Näh-Garn ab. Wir empfehlen daher Nähversuche durchzuführen.

Wichtig: Handelsübliche Farbabweichungen können auftreten und berechtigen nicht zur Reklamation. Wir behalten uns die Änderung technischer Spezifikationen vor. Die registrierten und nicht registrierten Urheberrechte der Dessinierungen sind ausschliessliches Eigentum der Camira Fabrics Limited.

Contact

UK Head Office:	+44 (0)1924 490491
Germany:	+49 7031 60 84 30
Scandinavia:	+45 32 55 20 01
France/Benelux:	+32 56 227 266
USA:	+1 616 288 0655
China:	+86 (0) 21 6133 1812

www.camirafabrics.com



F

Composition

60% Laine Vierge,
40% Vrai Chanvre

Écologique

Rapidement renouvelable et compostable avec le certificat EU Ecolabel.

Largeur

140cm minimum

Poids

460g/m² ±5% (645g/m.l ±5%)

Résistance à l'abrasion

Garantie de 5 ans / 50,000 Martindale tours (renseignements complémentaires disponibles)

Flammabilité

BS EN 1021 - 1:2014 (cigarette)
BS EN 1021 - 2:2014 (allumette)
BS 7176:2007 Low Hazard
BS 5852:2006 Section 4 Ignition Source 5
BS 7176:2007 Medium Hazard
Notez: Réaction au feu dépend de la mousse utilisée.

Solidité à la lumière

5 (ISO 105 - B02:2014)

Solidité au Frottement

Mouillé: 3, Sec: 4 (ISO 105 - X12:2002)

Nettoyage

Aspirer régulièrement. Nettoyage à sec professionnel. Autrement, essuyer avec un tissu humide.

Veuillez noter que la performance du joint dépend de sa construction ainsi que de l'aiguille et du type de fil utilisés.

Remarque: une variation de couleurs peut provenir (commerciallement tolérable). Nous réservons le droit de changer les spécifications techniques sans préavis. Les Droits de Conception non-enregistrés et les droits d'auteur de tous les motifs sont la propriétés exclusives de Camira Fabrics Limited.

ES

Composición

60% Lana,
40% Verdadero Cáñamo

Ambiental

Rapidamente renovable y compostable. Certificado con EU Flower.

Ancho

140cm mínimo

Peso

460g/m² ±5% (645g/lin.m ±5%)

Resistencia a la abrasión

Garantía de uso 5 años / 50,000 Martindale ciclos (más información disponible bajo consulta)

Inflamabilidad

BS EN 1021 - 1:2014 (cigarrillo)
BS EN 1021 - 2:2014 (cerilla)
BS 7176:2007 Low Hazard
BS 5852:2006 Section 4 Ignition Source 5
BS 7176:2007 Medium Hazard
Condiciones ignífugas dependientes del tipo de foam utilizado.

Solidez a la luz

5 (ISO 105 - B02:2014)

Solidez al rozamiento

Húmedo: 3, Seco: 4 (ISO 105 - X12:2002)

Limpieza

Limpiar con aspirador con regularidad. Limpiar en seco, o bien lavar con un paño húmedo.

Tenga en cuenta que el rendimiento de la costura depende de la construcción de la costura, además de la aguja y del tipo de rosca. Le recomendamos que se aconsejen para coser la costura.

Nota: las variaciones de lote a lote en la sombra se puede producir dentro de tolerancias comerciales. Nos reservamos el derecho a efectuar modificaciones técnicas sin previo aviso. Los derechos sobre los diseños no registrados y los derechos de autor en todos los diseños son propiedad exclusiva de Camira Fabrics Limited.

camira

style with substance

www.camirafabrics.com

Hemp



Task seating



Soft seating



Cigarette & Match



Medium Hazard



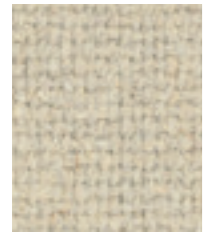
Environmental



Year guarantee

Hemp

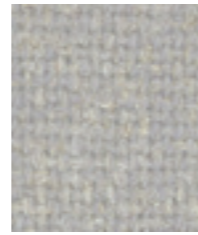
www.camirafabrics.com/samples



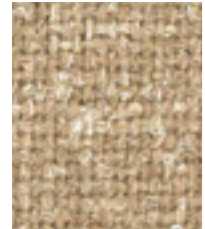
Oat
HWP05



Pollen
HWP08



Dew
HWP16



Bale
HWP02



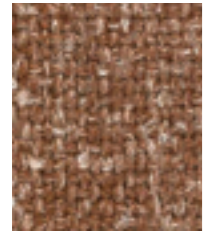
Gorse
HWP03



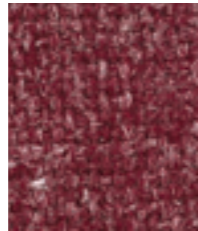
Alec
HWP12



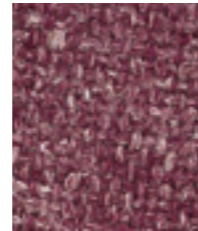
Arable
HWP04



Seed
HWP13



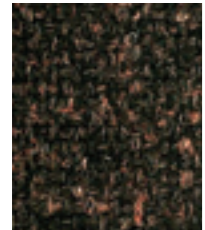
Teasel
HWP15



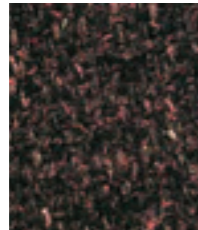
Heath
HWP07



Moorland
HWP10



Nest
HWP11



Maple
HWP14



Hedgerow
HWP09



Plough
HWP01

Note:

• Highlighted shades are available from stock. Other colourways are available in 10 - 15 working days.

Photographic fabric scans are not colour accurate. Always request actual fabric samples before ordering.



Nurture
HWP17



Grain
HWP27



Acre
HWP19



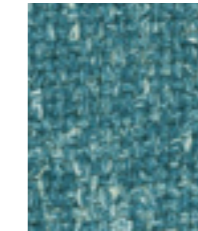
Dale
HWP18



Shire
HWP22



Fallow
HWP28



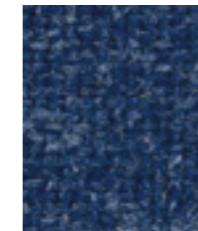
Trough
HWP20



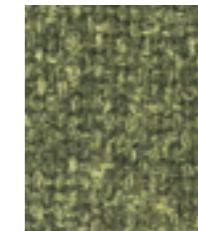
Field
HWP24



Stile
HWP29



Ashworth
HWP26



Hectare
HWP21



Husk
HWP31



Root
HWP06



Barn
HWP23



Sedge
HWP25



Sickle
HWP30