

Product information

Main Line Flax is the natural progression of our all-time favourite Main Line Plus fabric, building on our industry leading bast fibre expertise to create a new inherently flame retardant fabric from sustainable sources. A symbol of purity, wild flax has been used in textiles for thousands of years thanks to its strong, long and smooth fibres found inside the stem of the plant. The fibre is spun into a 70-30 wool flax blend, then dyed to create beautiful mixture yarns which are woven into interesting solids and cross-colours inspired by the rich tones of rare jewels.



UK/16/005

Technical information

UK

Composition

70% Virgin Wool,
30% Flax

Environmental

Rapidly renewable and compostable.

Width

140cm minimum

Weight

435g/m² ±5% (610g/lin.m ±5%)

Abrasion Resistance

5 year guarantee / 50,000 Martindale cycles (full details available)

Flammability

BS EN 1021 - 1:2014 (cigarette)
BS EN 1021 - 2:2014 (match)
BS 7176:2007 Low Hazard
BS 5852:2006 Section 4 Ignition Source 5
BS 7176:2007 Medium Hazard
BS 5867-2: Type B

Note: Flammability performance is dependent on foam used.

Light Fastness

5 (ISO 105 - B02:2014)

Fastness to Rubbing

Wet: 3, Dry: 4 (ISO 105 - X12:2002)

Cleaning

Vacuum regularly. Professionally dry clean or wipe clean with a damp cloth.

Note: Batch to batch variations in shade may occur within commercial tolerances. We reserve the right to alter technical specifications without notice. The Unregistered Design Rights and the Copyright in all designs are the exclusive property of Camira Fabrics Limited.

D

Zusammensetzung

70% Schurwolle,
30% Flachs

Umweltfreundlich

Schnell erneuerbar und kompostierbar.

Breite

140cm nutzbare Breite

Gewicht

435g/m² ±5% (610g/lfd.M ±5%)

Scheuerfestigkeit

5 Jahre Garantie / 50,000 Martindale Scheuertouren (Details auf Anfrage)

Feuersicherung

BS EN 1021 - 1:2014 (Zigarettentest)
BS EN 1021 - 2:2014 (Streichholztest)
BS 7176:2007 Low Hazard
BS 5852:2006 Section 4 Ignition Source 5
BS 7176:2007 Medium Hazard
BS 5867-2: Type B

Bemerkung: Schwerentflammbarkeit hängt von verwendetem Schaum ab.

Lichtechtheit

5 (ISO 105 - B02:2014)

Reibechtheit

Nass: 3, Trocken: 4 (ISO 105 - X12:2002)

Reinigung

Regelmässig absaugen. Professionelle Trockenreinigung. Alternativ dazu mit einem feuchten Tuch abwischen.

Wichtig: Handelsübliche Farbabweichungen können auftreten und berechtigen nicht zur Reklamation. Wir behalten uns die Änderung technischer Spezifikationen vor. Die registrierten und nicht registrierten Urheberrechte der Dessinierungen sind ausschliessliches Eigentum der Camira Fabrics Limited.

Contact

UK Head Office:	+44 (0)1924 490491
Germany:	+49 7031 60 84 30
Scandinavia:	+45 32 55 20 01
France/Benelux:	+32 56 227 266
USA:	+1 616 288 0655
China:	+86 (0) 21 6133 1812

www.camirafabrics.com



F

Composition

70% Laine Vierge,
30% Lin

Écologique

Rapidement renouvelable et compostable.

Largeur

140cm minimum

Poids

435g/m² ±5% (610g/m.l ±5%)

Résistance à l'abrasion

Garantie de 5 ans / 50,000 Martindale tours (renseignements complémentaires disponibles)

Flammabilité

BS EN 1021 - 1:2014 (cigarette)
BS EN 1021 - 2:2014 (allumette)
BS 7176:2007 Low Hazard
BS 5852:2006 Section 4 Ignition Source 5
BS 7176:2007 Medium Hazard
BS 5867-2: Type B

Notez: Réaction au feu dépend de la mousse utilisée.

Solidité à la lumière

5 (ISO 105 - B02:2014)

Solidité au Frottement

Mouillé: 3, Sec: 4 (ISO 105 - X12:2002)

Nettoyage

Aspirer régulièrement. Nettoyage à sec professionnel. Autrement, essuyer avec un tissu humide.

Remarque: une variation de couleurs peut provenir (commerciallement tolérable). Nous réservons le droit de changer les spécifications techniques sans préavis. Les Droits de Conception non-enregistrés et les droits d'auteur de tous les motifs sont la propriété exclusives de Camira Fabrics Limited.

ES

Composición

70% Lana Virgen,
30% Lino

Ambiental

Rapidamente renovable y compostable.

Ancho

140cm mínimo

Peso

435g/m² ±5% (610g/lin.m ±5%)

Resistencia a la abrasión

Garantía de uso 5 años / 50,000 Martindale ciclos (más información disponible bajo consulta)

Inflamabilidad

BS EN 1021 - 1:2014 (cigarillo)
BS EN 1021 - 2:2014 (cerilla)
BS 7176:2007 Low Hazard
BS 5852:2006 Section 4 Ignition Source 5
BS 7176:2007 Medium Hazard
BS 5867-2: Type B

Condiciones ignífugas dependientes del tipo de foam utilizado.

Solidez a la luz

5 (ISO 105 - B02:2014)

Solidez al rozamiento

Húmedo: 3, Seco: 4 (ISO 105 - X12:2002)

Limpieza

Limpiar con aspirador con regularidad. Limpiar en seco, o bien lavar con un paño húmedo.

Nota: las variaciones de lote a lote en la sombra se puede producir dentro de tolerancias comerciales. Nos reservamos el derecho a efectuar modificaciones técnicas sin previo aviso. Los derechos sobre los diseños no registrados y los derechos de autor en todos los diseños son propiedad exclusiva de Camira Fabrics Limited.

camira

style with substance

www.camirafabrics.com



Task seating



Soft seating



Cigarette & Match



Medium Hazard



Environmental



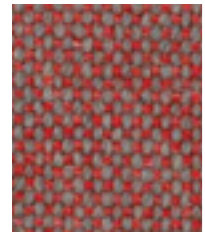
Year guarantee

Main Line Flax

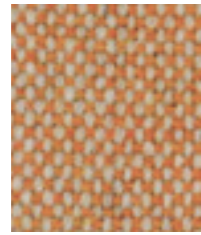
www.camirafabrics.com/samples

Note:

Photographic fabric scans are not colour accurate. Always request actual fabric samples before ordering.



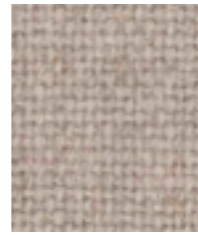
Barbican
MLF03



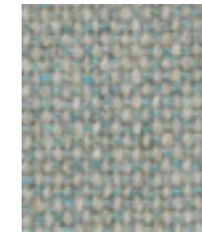
Lambeth
MLF08



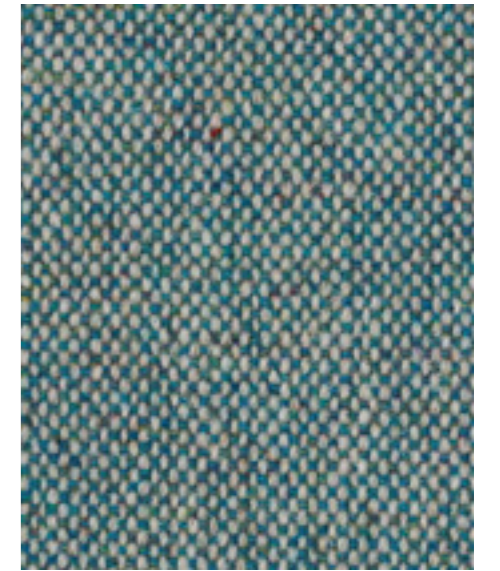
Kensington
MLF07



Upminster
MLF20



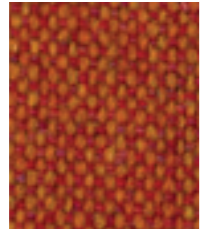
Newbury
MLF10



Bayswater
MLF24



Aldgate
MLF01



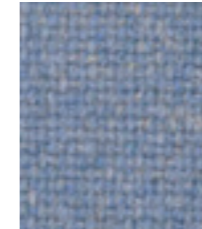
Leyton
MLF13



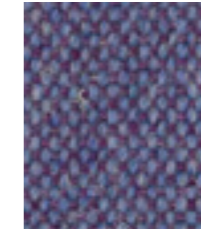
Finsbury
MLF30



Bethnal
MLF25



Waterloo
MLF21



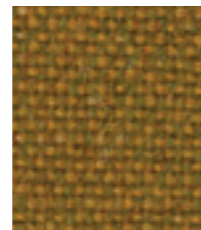
Charing
MLF27



Kilburn
MLF06



Tooting
MLF17



Goldhawk
MLF31



Archway
MLF02



Monument
MLF09



Highgate
MLF33



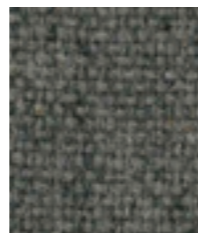
Westminster
MLF22



Parsons
MLF14



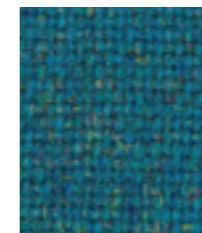
Mordon
MLF12



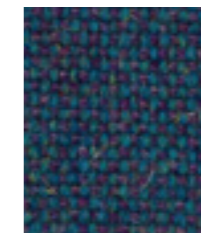
Camden
MLF26



Tufnell
MLF18



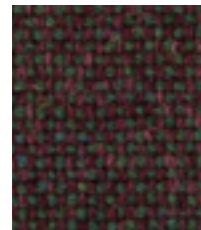
Stanmore
MLF37



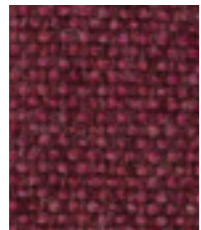
Russell
MLF38



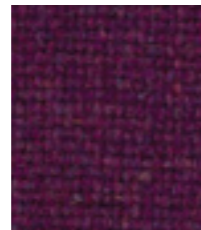
Holborn
MLF05



Paddington
MLF39



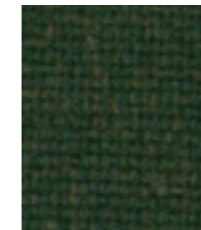
Wembley
MLF11



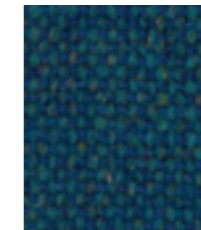
Euston
MLF04



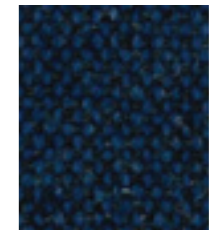
Bank
MLF23



Farringdon
MLF29



Pimlico
MLF34



Victoria
MLF19



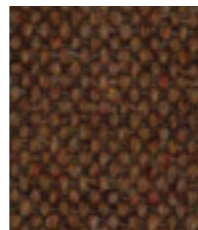
Temple
MLF16



Northfields
MLF40



Hillingdon
MLF41



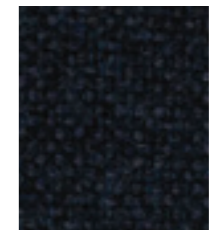
Stockwell
MLF15



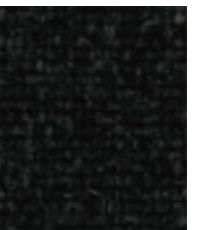
Greenford
MLF32



Brompton
MLF35



Tower
MLF36



Edgware
MLF28