

Pola

chair / armchair / stool / swivel

FAMILY
A P O L A

YEAR
2011

DESIGNER
LC studio

DESCRIPTION

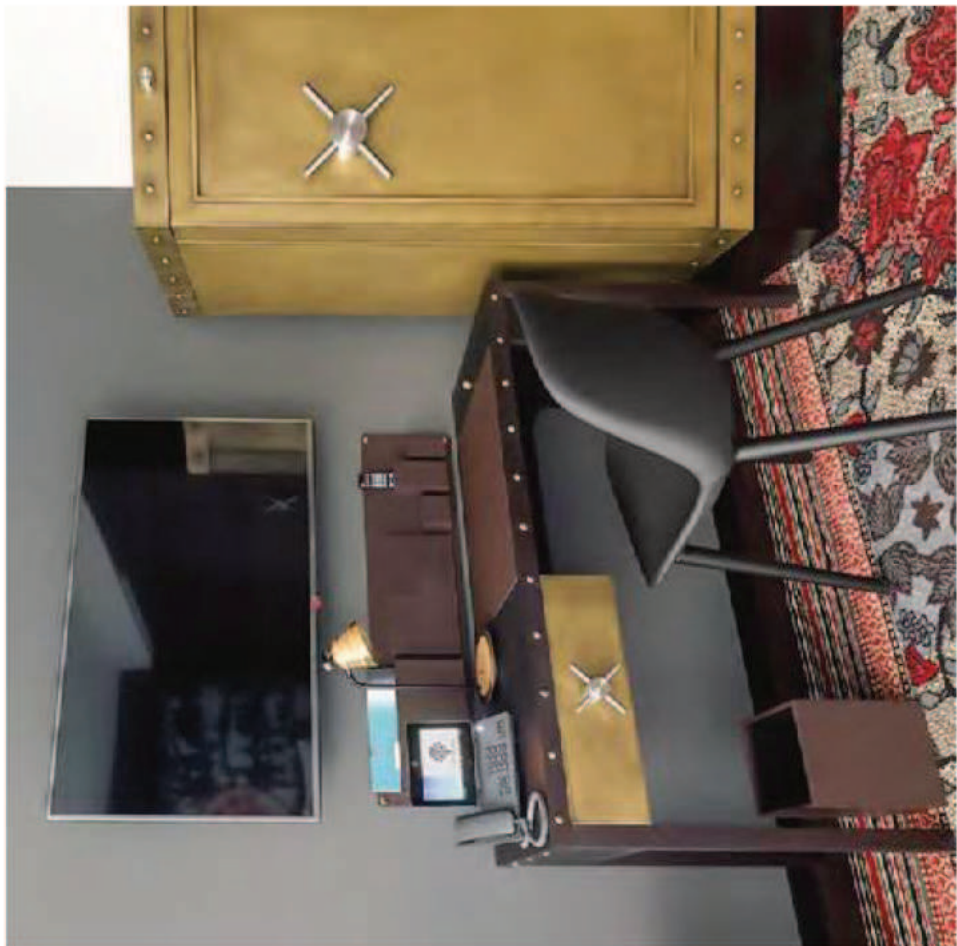
IT Le sedute Pola hanno una forma avvolgente e una versatilità che soddisfa ogni esigenza d'uso. I modelli Pola Light uniscono una scocca in polipropilene leggera e resistente, con o senza braccioli, con un'ampia scelta di basi: a slitta, cromata o verniciata con 4 gambe in acciaio anche questa proposta nelle versioni cromato e verniciato oppure l'apprezzatissima versione 4 gambe in legno di rovere naturale o tinto, o ancora girevole con base in alluminio a 4 o 5 razze, con o senza ruote, più la variante sgabello. La poltroncina Pola Round, sempre con scocca in polipropilene in diversi colori, abbinabile a un cuscino imbottito, oppure nella versione tutta imbottita, si presenta anch'essa con le molteplici varianti di basi dedicate, per una gamma di utilizzi che spaziano dalla casa, all'ufficio, agli ambienti collettivi, all' outdoor.

EN Pola chairs have a wrap-around shape and a versatility that satisfies all kinds of uses. The Pola Light models combine a lightweight, resistant polypropylene shell, with or without arms, with a wide choice of bases: sled, chrome or painted with 4 steel legs, also available in the chromed and painted versions or the popular version with 4 natural or stained oak legs, or again swivel with an aluminium base with 4 or 5 spokes, with or without castors, as well as the stool version. The Pola Round small armchair, again with a polypropylene shell in different colours - combined with padded cushion - or in the fully upholstered version, also has multiple variations of bases, for a range of uses that range from the home, to the office, to community spaces.



IT — POLA LIGHT R/4W Scocca in polipropilene, con sedile imbottito o tutta imbottita. Base a quattro gambe in massello di rovere.

EN — POLA LIGHT R/4W Side chairs. Shell in polypropylene, with seat upholstered or fully upholstered. Four legs in solid oak.



Pola / chair family



IT — Pola Round P/AW Scocca in polipropilene, con sedile imbottito o tutta imbottita. Base a quattro gambe in massello di rovere.
EN — Pola Round P/AW Shell in polypropylene, with seat upholstered or fully upholstered. Four legs in solid oak.



IT — POLA ROUND P/WP Scocca in polipropilene, con sedile imbottito o tutta imbottita. Base girevole a trespalo con gambe in massello di rovere.

EN — POLA ROUND P/WP Shell in polypropylene, with seat upholstered or fully upholstered. Swivel wooden pedestal base with legs in solid oak.





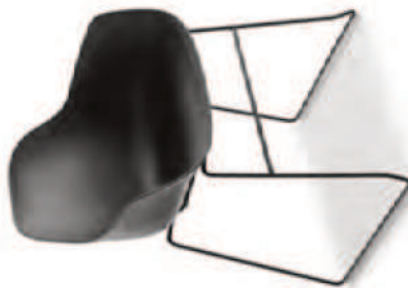
IT — POLA ROUND P/4L Scocca in polipropilene, con sedile imbottito o tutta imbottita. Base a quattro gambe in acciaio.
EN — POLA ROUND P/4L Shell in polypropylene, with seat upholstered or fully upholstered. Four legs base in steel.



IT — POLA LIGHT R/SB Scocca in polipropilene, con sedile imbottito o tutta imbottita. Base a slitta in acciaio.
EN — POLA LIGHT R/SB Shell in polypropylene, with seat upholstered or fully upholstered. Sled base in steel.



IT — POLA ROUND P/SB Scocca in polipropilene, con sedile imbottito o tutta imbottita. Base a slitta in acciaio.
EN — POLA ROUND P/SB Shell in polypropylene, with seat upholstered or fully upholstered. Sled base in steel.





IT — POLA ROUND P/PB Scocca in polipropilene, con sedile imbottito o tutta imbottita. Base girevole a trespolo in alluminio verniciato.
EN — POLA ROUND P/PB Shell in polypropylene, with seat upholstered or fully upholstered. Swivel pedestal base in powdercoated aluminum.

IT — POLA LIGHT R/SW Scocca in polipropilene, con sedile imbottito o tutta imbottita. Base girevole su 5 ruote con molla a gas regolabile in alluminio lucido.
EN — POLA LIGHT R/SW Shell in polypropylene, with seat upholstered or fully upholstered. Swivel base height-adjustable on castors in polished die cast aluminium or black reinforced nylon.



IT — POLA ROUND P/PSW Scocca in polipropilene, con sedile imbottito o tutta imbottita. Base girevole su 5 ruote con molla a gas regolabile in alluminio lucido.
EN — POLA ROUND P/PSW Shell in polypropylene, with seat upholstered or fully upholstered. Swivel base height-adjustable on castors in polished die cast aluminium or black reinforced nylon.

IT — POLA LIGHT 65_73_82/4W Scocca in polipropilene, con sedile imbottito o tutta imbottita. Base a quattro gambe in massello di rovere.

EN — POLA LIGHT 65_73_82/4W Shell in polypropylene, with seat upholstered or fully upholstered. Four legs in solid oak.

IT — POLA ROUND 65_73_82/4W Scocca in polipropilene, con sedile imbottito o tutta imbottita. Base a quattro gambe in massello di rovere.

EN — POLA ROUND 65_73_82/4W Shell in polypropylene, with seat upholstered or fully upholstered. Four legs in solid oak.



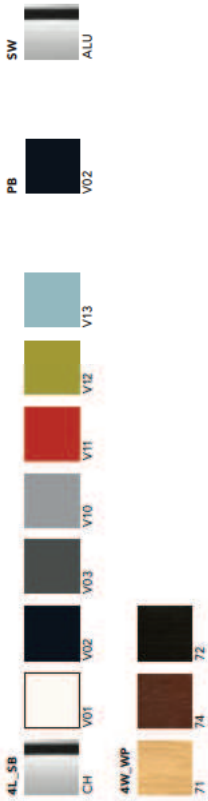
IT — POLA LIGHT 65_73_82/4L Scocca in polipropilene, con sedile imbottito o tutta imbottita. Base a quattro gambe in acciaio altoresistenziale.

EN — POLA LIGHT 65_73_82/4L Shell in polypropylene, with seat upholstered or fully upholstered. Four legs high resilient steel frame.



FINISHING

STRUTTURA / frame



Pola / chair family

SCocca / shell



TECHNICAL DATA

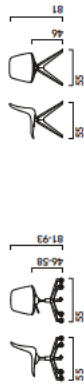


Pola Light R_4L

Pola Light R_SB

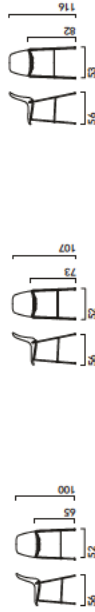
Pola Light R_4W

Pola Light R_PB



Pola Light R_SW

Pola Light R_WP



Pola Light 65_4L

Pola Light 73_4L

Pola Light 82_4L



Pola Light 65_4W

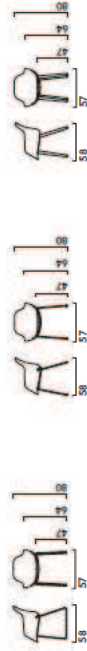
Pola Light 82_4W

RIVESTIMENTO STANDARD / standard upholstery



© p. 277

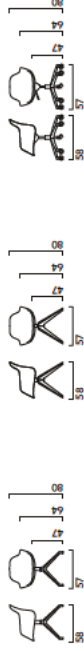
TECHNICAL DATA



Pola Round P_SB

Pola Round P_4L

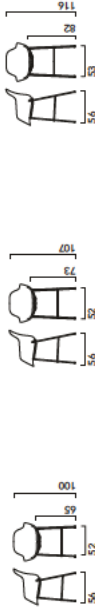
Pola Round P_4W



Pola Round P_PB

Pola Round P_WP

Pola Round P_SW



Pola Round 65_4L

Pola Round 73_4L

Pola Round 82_4L



Pola Round 65_4W

Pola Round 82_4W