

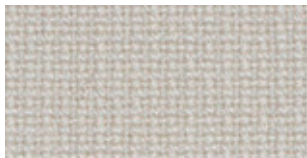
Q  
B  
B  
R  
E



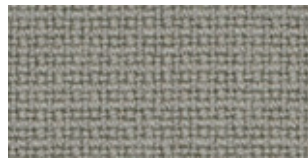
**FAME™**

---

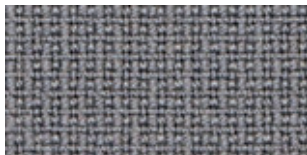
by Gabriel



60005



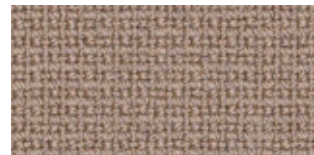
61136



60078



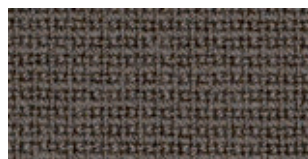
61135



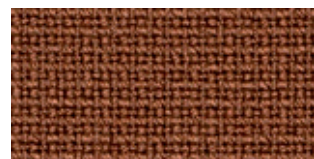
61003



60003



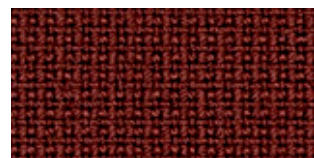
61060



61131



61133



63076



60017



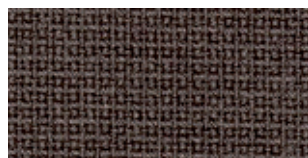
60019



61047



60999

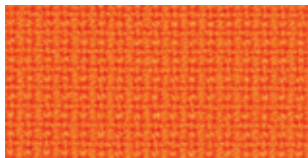


60051



61044

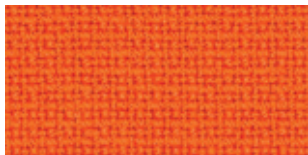
Please be aware that the PDF colour shades can appear different from the real fabric colours.



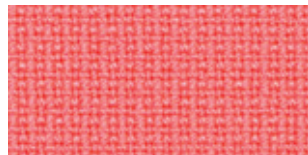
63077



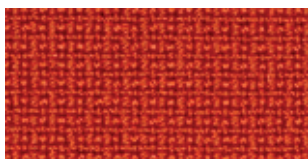
64169



63016



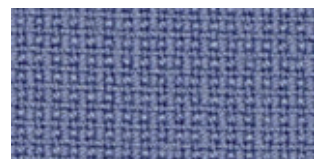
64165



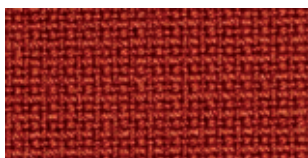
63078



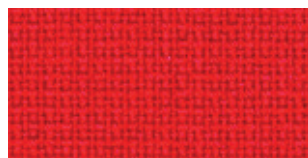
64166



65081



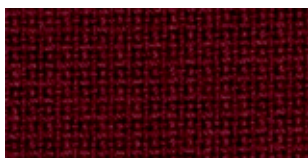
64168



64119



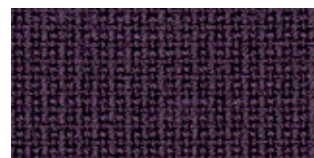
65082



64167



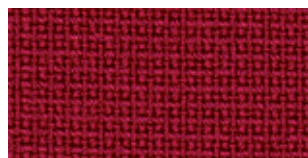
64089



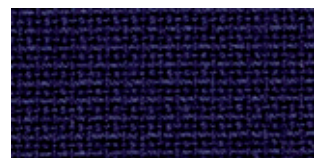
64055



61108

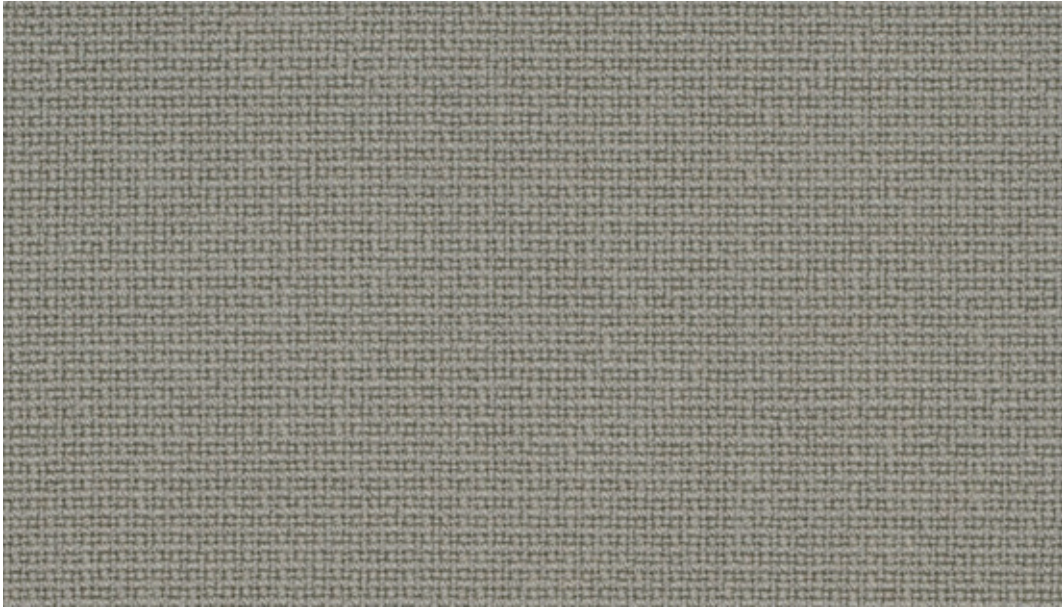


64058



66132

Please be aware that the PDF colour shades can appear different from the real fabric colours.



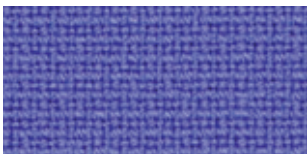
61136



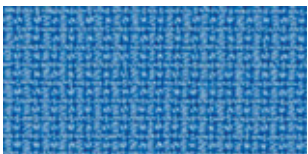
66130



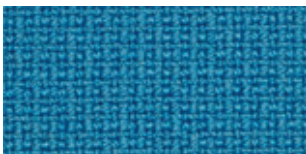
67068



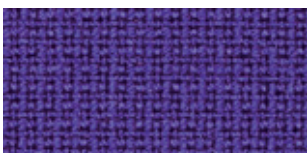
65083



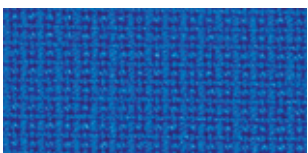
66118



66133



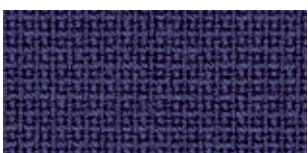
65084



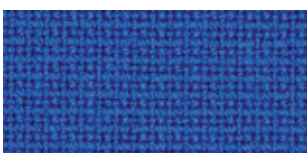
66131



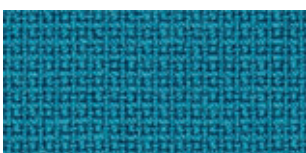
67016



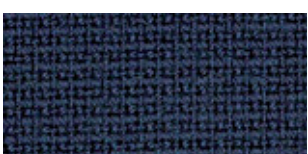
66005



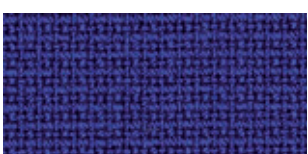
66075



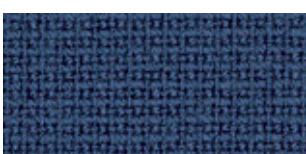
67004



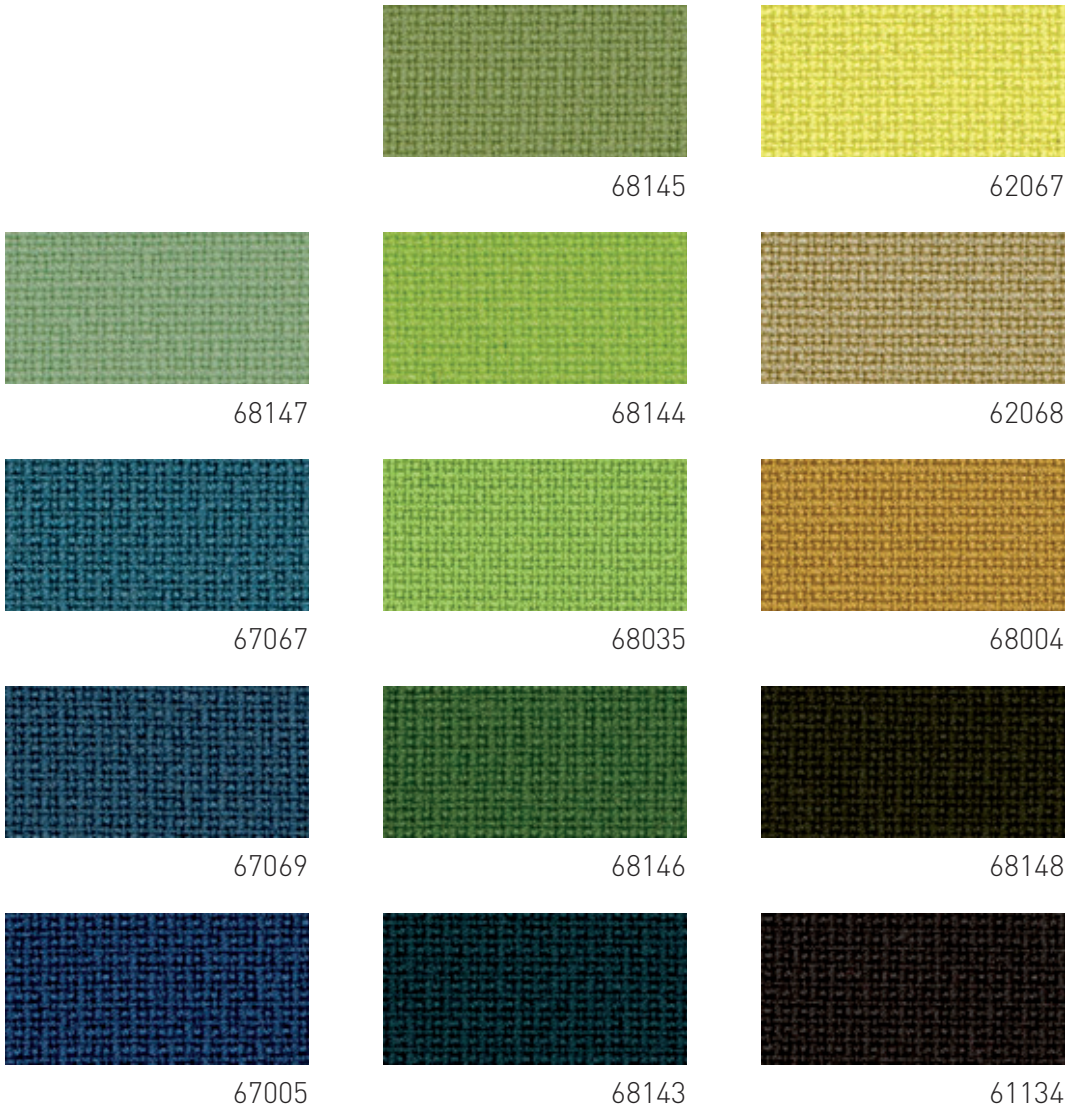
66061



66032



66071



Please be aware that the PDF colour shades can appear different from the real fabric colours.

# FAME™

Design no.	2409	
Fields of application	contract furnishing	
Material	wool · polyamide	95 % · 5 %
Weight	630 gr/lm · [1.39 lbs/ly]	
Width	140 cm · [55"]	
Abrasion resistance	rubs - EN ISO 12947-2 (Martindale)	200,000
Pilling	EN ISO 12945-2	4
Colour fastness to light	scale 1-8, max. 8 · EN ISO 105 - B02	5-7
Colour fastness to rubbing	scale 1-5, max. 5 · EN ISO 105x12 (wet/dry)	4-5
Cleaning	dry cleaning	P[S]
Flammability:	EN 1021 P1&2 · BS 5852, Crib 5 · BS 5852 0&1 · Calif. Bull. 117-E Class 1 · UNI 9175 Class 1 IM · AM 18 - NF D 60-013 · IMO Resolution MSC 307 (88); Annex 1, Part 8 · MED registration IMO. Will also pass other flammability standards. Flame retardant performance is dependent upon the foam used and fireproof treatment.	
	☀ AATCC 16 Lightfastness	pass
	☑ AATCC 8 or 116 wet/dry crocking	pass
	🔥 California Bulletin CAL 117-E Class 1	pass
	📐 ASTM D4966-02 Martindale Abrasion	pass
	★ ASTM D3511 Pilling	pass
Design/Colours	Inger Mosholt Nielsen/Cenk Kivrikoglu	

Subject to changes and colour differences

