

hitch|mylius

contemporary
upholstered furniture



hitch|mylius

6	Introduction
8	Public spaces
14	Education
20	Healthcare
26	Hospitality
32	Corporate
38	Our service
40	Fabric and finishes
42	Environment
44	People
46	Process
50	Designers
55	Product overview
62	Contact

Contents

For over forty years Hitch Mylius have been making high quality, beautifully designed and crafted furniture in north London. With product ranges that include the work of some of the world's most respected designers and architects, together with classic in-house designs and our collaborations with younger designers, each piece is handmade to order by our skilled team based at our factory in Enfield.

Ever since Tristram and Hazel Mylius founded the company in 1971 we have built a well-deserved reputation for design and manufacturing excellence among our extensive and loyal client base. Our broad range of furniture has been supplied around the globe to a wide variety of projects ranging from small office receptions to international transport hubs, corporate headquarters, hospitals, hotels and universities.

Introduction

Public spaces



Successful public space projects have included transport terminals, art galleries and museums, arenas and sports stadia, libraries, shopping malls and airports. The diversity of these projects as well as the extreme demands of these high traffic spaces is testimony to the versatility and durability of our furniture.



hm83 | Eurostar
St Pancras International,
London



hm86 and hm93 | RNLI,
Poole

Public spaces clients include

Bloomberg Lounge, London City Airport
British Library | London
Business Design Centre | London
Camden Council | London
Cheltenham Town Hall
Chhatrapati Shivaji International Airport | Mumbai
Croydon Council Thornton Heath Library | London
Dún Laoghaire Library | Co. Dublin
Edinburgh Airport
Eurostar, St Pancras International | London
Eurostar, Gare du Nord | Paris
Friis Shopping Mall | Aalborg
Gatwick Airport | London
Glasgow Science Building
Heathrow Airport | London
Kaleidoscope Shopping Mall | Moscow
Labège Library | Toulouse
Lisbon Airport | Portugal
Mayenne Library | France
Museum of London
National Maritime Museum | London
The Oracle Shopping Centre | Reading
RNLI College | Poole
Royal Festival Hall | London
Somerset House | London
Teddington Library | London
Victoria and Albert Museum Sackler Centre | London
Westfield White City | London

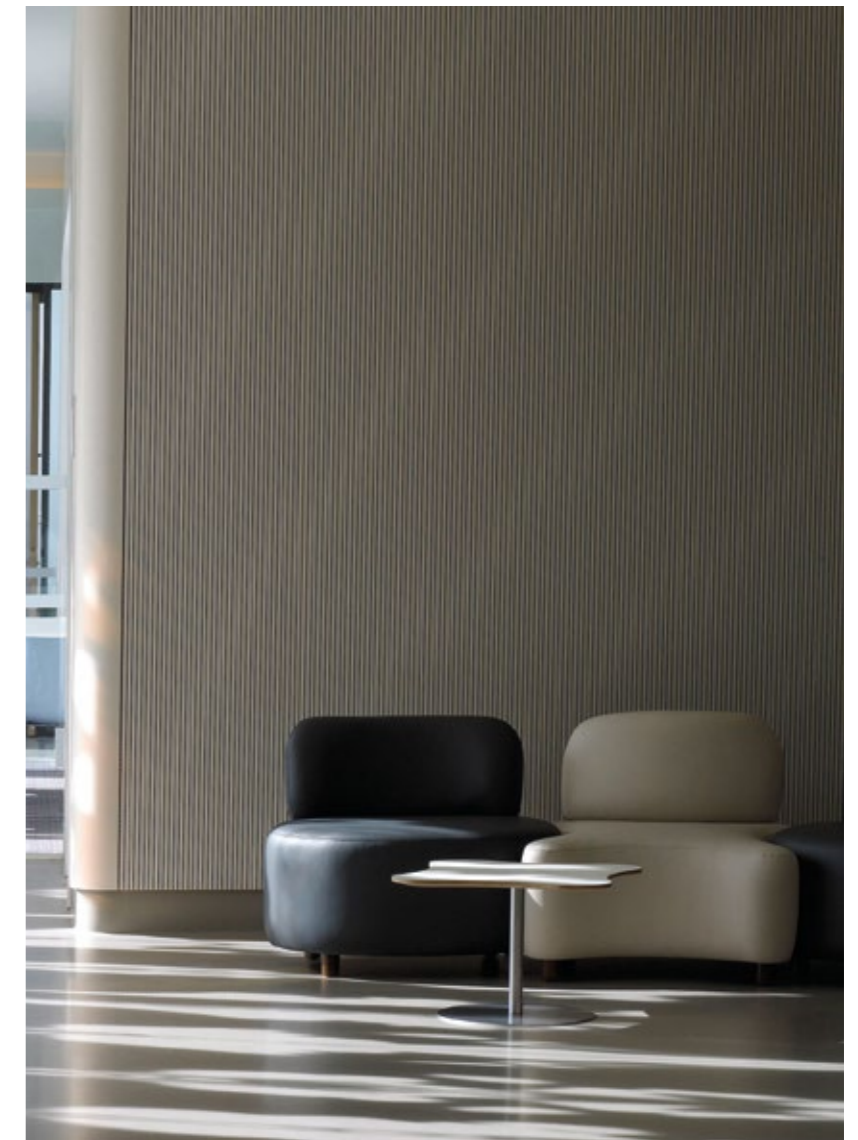




Education



Our furniture has been specified in schools and universities around the world and we are able to meet the education sector's demanding durability requirements within tight budgetary constraints. Our comprehensive range is ideally suited to the widest variety of educational environments from fun and engaging furniture for primary schools to practical, reliable and sophisticated solutions for forward thinking universities and further education facilities.



hm55 | London
Metropolitan University



hm61 | Oxford University



Education clients include

- Alan Gilbert Learning Commons, University of Manchester**
- Bath Spa University**
- Bridge Academy Hackney | London**
- Central Saint Martins, University of the Arts College | London**
- City of Westminster College | London**
- City College | Norwich**
- Clapham Manor Primary School | London**
- Glasgow Caledonian University**
- Glasgow School of Art**
- Hampshire County Council**
- King Saud bin Abdulaziz University | Riyadh**
- London Metropolitan University**
- London School of Economics**
- New York University | Abu Dhabi**
- Nottingham Trent University**
- Oxford University**
- Princess Noura University | Riyadh**
- Ravensbourne College | London**
- Rice University | Houston**
- Royal College of Art | London**
- Saïd Business School | Oxford**
- Sheffield Hallam University**
- Sussex Coast College | Hastings**
- University of Hull**
- University College London**



hm46

Selected models can be adapted to include power and data units.



hm83 | City of Westminster College, London



hm78





Healthcare



Modern healthcare providers understand that good design enhances an overall sense of wellbeing, aids patient recovery and puts visitors at ease. Having been specified in many NHS and private hospitals and surgeries where the value of a holistic approach is appreciated, our furniture offers practical, long-lasting and affordable solutions for a range of healthcare environments.

Recent products designed specifically for healthcare use, addressing the particular requirements of care homes and the needs of the elderly can be used in conjunction with examples from our core collection.



←
hm67, hm68 and hm88
| Basingstoke Hospital
→
hm20 and hm63 |
BioQuarter, Edinburgh

Healthcare clients include

- Aberdeen Children's Hospital** | Aberdeen
- ACAD Central Middlesex Hospital**
- Basingstoke Hospital**
- Bloomsbury Dental Practice** | London
- Colchester Hospital**
- Edinburgh BioQuarter**
- Evelina Children's Hospital** | London
- Gartnavel Royal Hospital Chapel** | Glasgow
- Guy's Hospital** | London
- Hillingdon Hospital** | London
- Kings College Hospital** | London
- The Medical Chambers Kensington** | London
- Milton Keynes Hospital**
- Mount Carmel Private Hospital** | Dublin
- North London Hospice** | Enfield
- The Priors Dental Practice** | Stafford
- Portadown Health and Care Centre** | Armagh
- Queen Mary University Dental School** | London
- St. Luke's Hospice** | Sheffield
- St. Thomas's Hospital** | London
- University College London Hospital**
- The Wellcome Trust** | London







Hospitality

→

Mint Hotel, Amsterdam



hm18 and hm86 | Mint Hotel, Tower of London



Our experience throughout the hospitality and leisure industry ranges from hotel receptions and bedrooms to private members' bars and exclusive restaurants. Our versatile collection offers solutions for the widest scope of contemporary interiors, from budget to luxury, and the almost unlimited palette of coverings allows our customers to achieve their desired look for any setting.



hm82 and hm86 | The Chester Hotel, Aberdeen

Hospitality clients include

- Barbican Private Members Club** | London
- Berns Hotel** | Stockholm
- The Bridgewater Hall** | Manchester
- British Museum Members Room** | London
- Castell Deudrath Hall** | Portmeirion
- Cinnamon Club** | London
- Das Triest Hotel** | Vienna
- Emirates Stadium** | London
- Hilton Hotels** | UK
- Hydro Arena** | Glasgow
- Liverpool Football Club**
- Members Bar, Royal Festival Hall** | London
- Mint Hotels** | Amsterdam, Leeds and London
- Manchester United Football Club**
- Novotel Hotels** | UK and Europe
- One Aldwych Hotel** | London
- Radisson Blu Hotel** | Nantes
- The Chester Hotel** | Aberdeen
- The O2 Arena** | London
- Schlosshotel** | Ludwigsburg
- Virgin Active** | Porto
- Virgin Atlantic Airlines V Room** | Gatwick





hm58 | The Inovo Building, Glasgow



Corporate



hm59 | Aqueduct, London



hm86 | The Inovo Building, Glasgow

We offer a comprehensive collection that addresses the many varied demands of the office environment. From elegant and discreet designs to distinctive feature pieces, sofas and chairs in a range of sizes to benches and modular seating, our furniture is ideal for receptions, offices, breakout spaces and atria. Finishes can be matched and dimensions can be tailored.



Corporate clients include

- 3M Headquarters** | Bracknell
- American Express Headquarters** | Brighton
- Anomaly** | London
- Barclays** | UK and Europe
- BBC North** | Salford Quays
- BBC Scotland** | Glasgow
- Blue Hive** | London
- BP International** | worldwide
- British Aerospace** | Bristol
- British Council** | worldwide
- Channel 4 Television** | London
- Coca Cola** | Ireland
- The Co-operative Group Headquarters** | Manchester
- Deutsche Bank** | London
- Endemol** | UK
- The Foreign and Commonwealth Office** | worldwide
- GDF Suez** | London
- Google** | London, Dublin and Berlin
- GSK** | London
- HM Treasury** | London
- HMRC** | London
- The Home Office** | London
- The Inovo Building** | Glasgow
- Integral Business Centre** | Moscow
- ITV Studios** | London
- Jones Lang LaSalle** | London
- MacMillan Publishing** | London
- Microsoft Headquarters** | Reading
- Network Rail** | Milton Keynes
- News UK** | London
- Shine TV** | UK
- Siemens Headquarters** | Frimley
- Skoda showrooms** | Europe
- Sony Bravia Colour Rooms** | London
- Stryker Corporation** | Newbury
- Toyota showrooms** | UK
- Universal Music** | London
- Virgin Money Headquarters** | Edinburgh
- Warner Bros. Studios** | Hertfordshire
- Yell Headquarters** | Reading



hm93 | Burges Salmon,
Bristol





hm86

Our service

Our responsive and reliable service ensures that customer expectations and project deadlines are consistently met. We adopt a collaborative approach with our customers, with advice and support available from the early stages of your project through to product delivery.

CAD blocks and models as well as high resolution images of our collection are available to download. For larger projects we can supply samples of our furniture to aid in the specification process, and will be happy to assist with space planning if required. Samples of fabrics, leathers and surface finishes are also available.

Whilst our comprehensive range is available in a wide variety of options, sizes and finishes, we are able to vary the standard specification on many of our products allowing them to be tailored to the exact needs of your project. In some cases specific needs require a unique solution; we would be happy to discuss your requirements should a bespoke solution be required.

Once complete, your order can be delivered to your warehouse, or we can provide installation options if required. Transportation is carried out either by company staff in our own vehicles, or by carefully vetted outside carriers. Extreme care is always taken to ensure that products are delivered in perfect condition. International shipping can be

arranged along with supporting documentation; if required, orders can be collected from our factory in Enfield.

Our furniture is supplied with a 5 year guarantee against defects in materials and workmanship subject to normal contract use, excluding defects in the covering materials (normally guaranteed by the manufacturer/supplier thereof). Any remedial measures will be undertaken quickly and efficiently within a mutually agreed time-frame to suit as far as possible the convenience of the client.

We guarantee at least 10 years continuity of supply, allowing projects to be expanded, or pieces to be re-upholstered.

You are welcome to visit our showroom in Enfield where, as well as viewing our furniture collection, we can show you around the factory to see the furniture being made. Please contact us to arrange an appointment.



Fabrics and finishes



hm66

We can upholster our furniture in the widest selection of fabrics, vinyls and leathers to suit all contract requirements.

As a starting point, please request our comprehensive standard fabric range, organised into price bands. If your required fabric isn't shown or your project has specific needs, we can discuss the many other ranges available. Our suppliers include Bute, Camira, CrestJMT, de Ploeg, Elmo, Gabriel, Kvadrat, Muirhead, Spradling, Stolz, Ultrafabrics, and Vescom; we are able to source from many others.

Many suppliers offer fabrics with specialist treatments including anti-microbial and anti-bacterial protection along with anti-stain finishes; we can advise on these, as well as discussing flammability requirements.

You can supply your own fabric, subject to it meeting the required flammability standards; please send us a sample for approval. Not all coverings are suitable for all models; please contact us for guidance.

Bases and tables are offered in a selection of standard finishes. Alternatives are often available, so please contact us with your requirements. Samples of fabrics, leathers and surface finishes can be supplied on request.



Since we started business in 1971 we have always been very aware of the potential impact of our work and products on the environment. We strive to mitigate and minimise our impact on the world through careful material selection, reduction in waste and improved energy efficiency.

Our unique combination of manufacturing standards and in-house design expertise means that our products are extremely durable and offer built in longevity. All of our pieces may be re-upholstered to extend the product life.

Environmental considerations are part of our everyday 'best practice', sustainability is an integral part of the design and sourcing process and we are committed to complying with all relevant environmental legislation. All of our employees are responsible for ensuring the highest standards of environmental care, and we provide information and support to assist this process.

We are audited annually and our business operations conform to BS EN ISO 14001:2004 Environmental Management Standard.

Environment

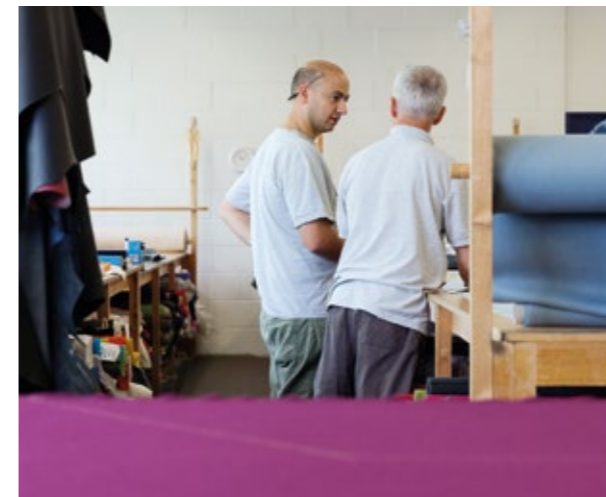
People



Our skilled and dedicated workforce based at our factory, office and showroom in north London strives to provide an excellent, responsive and reliable service, with a commitment to accommodating our client's needs.

Our manufacturing team is highly skilled and very experienced, with many members of our team having worked with us for over 20 years. Expertise in the widest selection of fabrics and leathers that manifests itself in meticulously crafted, detailed and beautifully finished furniture is testament to our commitment to supply the highest quality contemporary upholstered furniture.

A multi-disciplined sales and management team draws on a wide range of related backgrounds, education and training spanning industrial, interior, product and textile design, digital modelling and image creation. Our customers benefit from a depth of knowledge and experience in architectural, contract and retail sectors, and can call on us for support with material selection and sampling, working up bespoke solutions, project visuals or 2D & 3D space planning.



Process



1

Design and Development

Our collection includes in-house designs as well as the results of collaborations with established international designers and young design talent. Designs are developed and prototyped at our factory in Enfield, north London; our manufacturing experience, design heritage, and an understanding of sustainability combine to give our customers the highest quality, contemporary upholstered furniture that is relevant for the modern contract environment.

2

Manufacturing

Our skills lie in creating beautifully crafted furniture where quality relies on excellence in every stage of the manufacturing process.



3



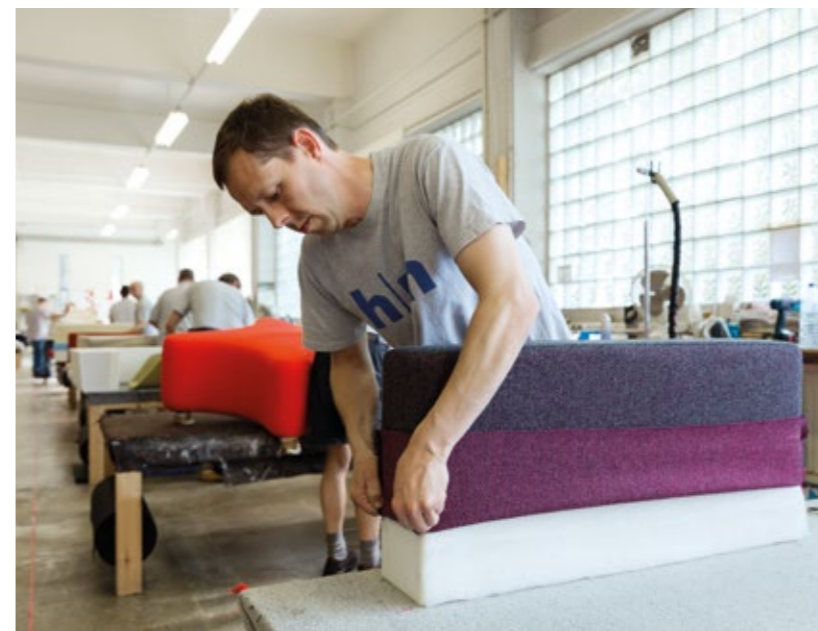
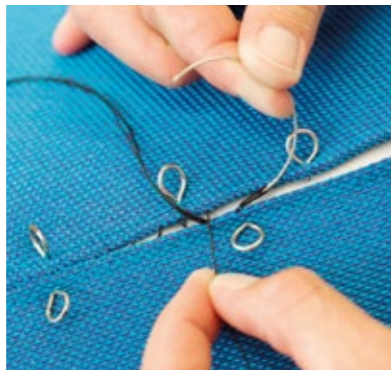
6



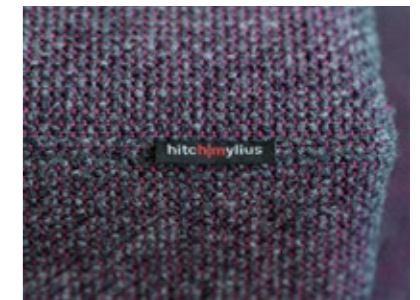
4



5



7



8

3

Sourcing

We have excellent working relationships with our suppliers, many of them local, and work closely with them on the development of new designs. Traditional techniques coupled with new technologies and an underlying commitment to high standards provides the strongest foundation for the development of innovative and exciting new products.

4

Cutting

Once the fabric or leather has arrived and is quality checked, the process begins. Each piece is cut by hand with individual adjustments and tolerances made for the stretch and behaviour of the material.

5

Sewing

The knowledge, skill and experience of our cutting and sewing departments ensure that covers are tailored and sewn with meticulous care, creating elegant seam details for strength, structure and a perfect fit.

6

Preparation

Quality frame materials and construction combined with the precise cutting, layering and application of multi-density foam is the foundation for each piece of furniture.

7

Upholstery

Our upholstery team are trained to the highest standards of craftsmanship and demonstrate years of experience working with the widest selection of covering materials. An intuitive understanding of their craft ensures perfect seam lines, hand-finished and checked to meet our exacting standards for exceptional quality, guaranteeing comfort and longevity.

8

Quality and despatch

Products are individually checked for quality before wrapping and despatch. Finished furniture is stored and delivered with care to ensure your furniture reaches you in perfect condition.

Designers



1



4



2



3



6



5

Chijioke Aguh

Born in 1976, Chijioke Aguh studied furniture and product design at Middlesex and Southbank Universities and the Royal College of Art, London. Since graduating he has worked in a variety of disciplines including fashion, home accessories and furniture. His work was shortlisted for a Swarovski Design Award in 2002, and commended for the 2000 RSA Student Design Awards.

The **hm88** 'voluptuous bench' was developed with Hitch Mylius in 2003 and was a finalist for the Best Furniture for Public Space in the FX International Design Awards.

Azumi

Born in Japan in 1965 and 1966 respectively, Shin and Tomoko Azumi met at Kyoto City University of Art and both went on to study at London's Royal College of Art. After graduating, they formed their own design practice working for international clients in the fields of furniture, product and exhibition design.

Their collaboration with Hitch Mylius started in 2001 with the launch of **hm30**; in 2003 they developed the **hm38** dining chair. The Azumi partnership was dissolved in 2005 and both partners now have their own design consultancies.

David Chipperfield

Founded in 1984, David Chipperfield Architects serves an impressive client list through offices in London, Berlin, Milan and Shanghai. Working throughout Europe, the USA and China, notable projects include the Museum of Modern Literature in Marbach, the America's Cup Building in Valencia, Des Moines Public Library, Barcelona's City of Justice and the Neues Museum in Berlin.

The winner of numerous international awards including two-times winner of the RIBA Stirling Prize, Sir David Chipperfield CBE was awarded the RIBA Royal Gold Medal for Architecture in recognition of his lifetime's work. Designed originally for a private client, **hm991** was launched in 1999; **hm93** was developed in 2007.

Nigel Coates

Coates was born in Malvern in 1949 and trained at the University of Nottingham and at London's Architectural Association. One of Britain's most original thinkers in architecture, interior, exhibition and product design, Coates' architectural projects include the Centre for Popular Music in Sheffield and the Powerhouse in London. While much of his career has been devoted to teaching, Coates has also designed furniture, lighting and glassware for a number of European companies.

Hitch Mylius' collaboration with Coates began in 1994 with the Tongue chair designed for the Hotel Maritimo in Japan, followed by the Slipper collection, **hm60**. In 1998 Coates designed the immensely successful **hm61** for his prize-winning Oyster House at the Ideal Home exhibition. 2011 saw the launch of the **hm63** collection.

John Coleman

Coleman trained at the Royal College of Art and established his furniture design practice in 1981. He has designed and produced furniture to commission and for batch production, has exhibited widely and has taught on a number of design courses. He now concentrates on design for industry, his work being characterised by its clean lines and simple, balanced forms. **hm42** was launched in 2010.

Matthias Demacker

Born in Germany in 1970, Matthias Demacker studied design at Niederrhein Polytechnic at Krefeld. After graduating, he moved to Munich where he gained experience in a number of design consultancies and interior design studios before setting up his own practice. He has received many international accolades including the Interior Innovation Award and the Red Dot Design Award, and is working on furniture and product designs for clients across Europe. The **hm58** and **hm59** collections were developed with Hitch Mylius in 2009.

- 1 Chijioke Aguh
- 2 Azumi
- 3 David Chipperfield
- 4 Nigel Coates
- 5 John Coleman
- 6 Matthias Demacker

Kenneth Grange

Acknowledged master of British product design, octogenarian Sir Kenneth Grange CBE, RDI is the creator of such notable design icons as the Intercity 125 train, Kodak Instamatic camera and the London taxi. One of the founders of world-renowned multi-disciplinary consultancy Pentagram in 1972, today Grange still continues to work with design-led British companies including Anglepoise and Margaret Howell.

In late 2009, Hitch Mylius commissioned Grange to develop the first of a new seating collection designed specifically for healthcare use, addressing the particular needs of the elderly. Thrilled to be working on a product aimed at an older generation of design-aware users, Grange admits that **hm82** has been one of the most challenging – and rewarding – jobs he has ever tackled.

Mueller Kneer

London architectural practice Mueller Kneer was established in 1997 by Architectural Association graduates Marianne Mueller and Olaf Kneer. Their work comprises a variety of projects from residential and commercial interiors to buildings for the arts and communities, with a client list that includes the ICA, the Guinness Trust and the White Cube Gallery in Bermondsey, south London. Mueller is a senior lecturer at the University of East London, Kneer lectures at the UCL Bartlett and both teach at the AA in London.

The **hm55** range, launched in 2008, was the practice's first venture into furniture design for commercial production.

Magnus Long

Since studying furniture and product design at Nottingham Trent University and exhibiting his first designs at the Milan Salone in 2005, Magnus Long has rapidly gained recognition as one of London's most accomplished designers. Having co-founded the prolific and award-winning design collective Viable London, he formally established his own practice in 2012 to design furniture and products that are 'positive, understandable and relevant to their audience' for both contract and domestic markets. He is an associate lecturer at Central Saint Martins University.

Long's **hm106** 'quiet bench' developed from one of his furniture designs for the celebrated CSM King's Cross campus that opened in 2012.

Massimo Mariani

Following his graduation from architecture school at the University of Genoa, Massimo Mariani joined the Renzo Piano Building Workshop to work on the redevelopment of the Lingotto factory in Turin. Later he worked with Herman Hertzberger's Architectuurstudio in Amsterdam on a number of projects in Italy, Germany and Japan.

Moving to London in 1998 to work on architectural and urban renewal schemes, he started his own practice in 2004 focussing on architecture and industrial design research. He has a number of furniture designs in production with high-profile Italian manufacturers and his pieces have been exhibited worldwide. In 2011 he was awarded an Honorable Mention at the XXII ADI Compasso d'Oro. Mariani's **hm101** public seating system for Hitch Mylius was launched in 2012.

Kazuko Okamoto

After graduating from Tokyo's ICS College of Arts in 1998, Okamoto worked as a designer in Japan for ten years before moving to Europe. Having settled in Milan, she is now working as a freelance furniture and product designer with commissions from a number of high-profile international clients. The **hm77** modular seating system launched in 2010 and her latest product, the **hm78** 'Shika' work chair launched in 2014 both typify Okamoto's characteristically playful approach to furniture design.

Simon Pengelly

One of the most prolific and wide-ranging designers working in the British furniture industry today, Pengelly has developed products with many of the UK and Europe's leading contemporary furniture manufacturers. Born on Oxfordshire in 1967, by the age of fifteen he had become an award-winning cabinet maker. He studied at Rycotewood College and Kingston Polytechnic, graduating in 1988. After working with Conran Design Group and Habitat, Pengelly started his own design company in 1996.

His first collaboration with Hitch Mylius was **hm83** in 2004, soon followed by **hm85** and **hm86**. The **hm87** cocoon chair was launched in 2012. A pragmatic approach to problem solving and his affinity with materials and processes have attracted briefs that have resulted in award-winning designs characterised by Pengelly's mix of understated design, engineering and innovation.



1



4



2



5



3



6

- 1 Kenneth Grange
- 2 Mueller Kneer
- 3 Magnus Long
- 4 Massimo Mariani
- 5 Kazuko Okamoto
- 6 Simon Pengelly

Stefan Schöning

Born in Belgium in 1968, Schöning set up his own industrial design practice in 1994 having product design at the Henry van de Velde Institute, Antwerp. Following successful commissions with commercial clients in Europe and the US, in 2004 he won the prestigious contract to design and develop a new corporate identity for the Belgian Railways for which he won a Red Dot Design Award and the coveted IF Designer of the Year 2008. His public seating system **hm213** is Schöning Studio's first collaboration with Hitch Mylius, launched in 2014.



1

Frederick Scott

Born in 1942 the son of an artisan furniture maker, Scott served his apprenticeship as a cabinet-maker in High Wycombe before gaining a scholarship to London's Royal College of Art in 1963. Widely regarded as the most talented British furniture designer of his generation, his reputation was firmly established with the launch of his classic Supporto series for Hille in 1979.

Later in his career he worked closely with Hitch Mylius to develop **hm25**. Fred Scott's working life was dogged by recurring illness and he died in 2001. After his death, and in collaboration with Scott's daughter Georgia, Hitch Mylius expanded the range with the addition of **hm26** in 2002.



2

Alexander Taylor

Born in 1975 in north east England, Taylor studied furniture and product design at Nottingham Trent University. He began his career with London-based architects Procter Rihl before setting up his studio in 2002 to realise his own designs.

Development of the **hm44** range with Hitch Mylius started in 2003. Taylor's awards have included Elle Decoration Young Designer of the Year in 2005, and his designs have been acquired for the New York Museum of Modern Art's permanent collection. As well as designing for manufacture, Taylor also lectures and has run workshops in the UK and abroad.



3

- 1 Stefan Schöning
- 2 Frederick Scott
- 3 Alexander Taylor

The following product overview provides an outline of each range in our collection. The complete range of options can be viewed at hitchmylius.co.uk

hm22

Product overview



hm17



hm26



hm18



hm30



hm20



hm34



hm22



hm35



hm23



hm42



hm25



hm44



hm46



hm51



hm55



hm57



hm58



hm59



hm61



hm63



hm66



hm67



hm68



hm77



hm78



hm82



hm83



hm85



hm86



hm87



hm88



hm93



hm101



hm106



hm213



hm991



Hitch Mylius Limited

Alma House, 301 Alma Road, Enfield, Middlesex, EN3 7BB
telephone +44 (0)20 8443 2616 | fax +44 (0)20 8443 2617
email sales@hitchmylius.co.uk | visit hitchmylius.co.uk

Design: Six | madebysix.com

Contact





Hitch Mylius Limited

Alma House, 301 Alma Road, Enfield, Middlesex, EN3 7BB
telephone +44 (0)20 8443 2616 | fax +44 (0)20 8443 2617
email sales@hitchmylius.co.uk | visit hitchmylius.co.uk