

M MACFLEX

VINYLS FOR CONTRACT UPHOLSTERY



CRIB 5

PORTUS, DURIUS & POLO

www.macflex.com

hitch|mylius

fabric range A

DURIUS



Cream 23199



Sand 23200



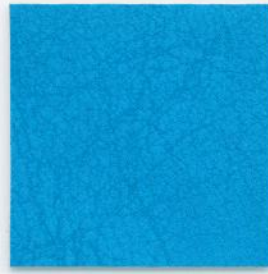
Mustard 23201



Light Blue 23125



Lilac 23127



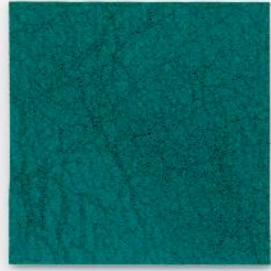
Turquoise 23123



Tan 23122



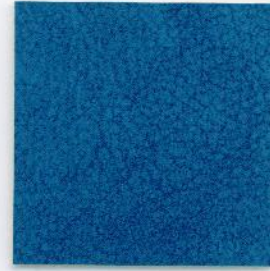
Orange 23120



Green 23124



Red 23121



Blue 23202

POLO



White 01445



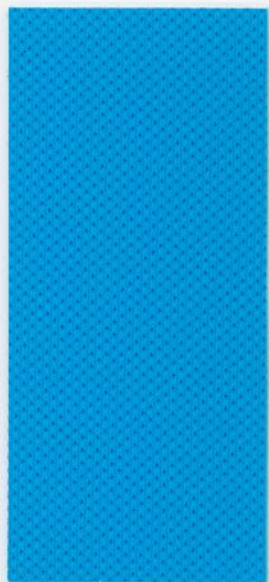
Yellow 00409



Orange 01327



Heather 01483



Sky 00665



Green 01025



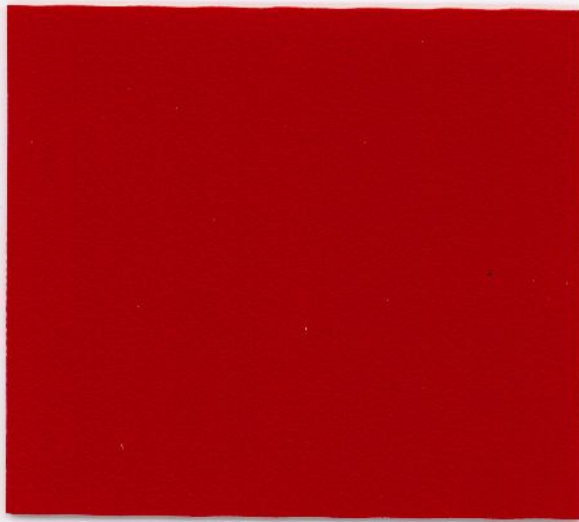
Red 01012



Dark Navy 16460

These products are suitable for all kinds of upholstery, especially for offices, public buildings, hospitals, restaurants and generally areas with high demands.

PORTUS



Red 00583



Ivory 00951



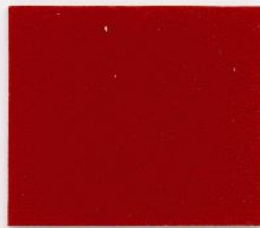
Cream 00697



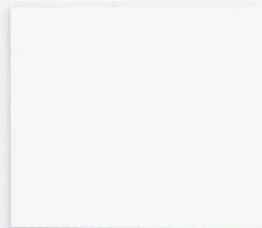
Mustard 16487



Orange 00707



Terracotta 18007



White 16811



Wine 16485



Camel 00349



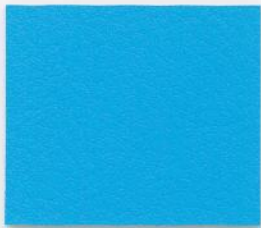
Tan 17253



Chocolate 17333



Dark Brown 00698



Turquoise 00261



Petrol 00559



Green 16484



Sage 00933



Lilac 00906



Sky 00566



Royal 00677



Ocean 14337



Silver 00161



Gunmetal 00907



Graphite 16841



Black 10019

TECHNICAL INFORMATION

POLO

Technical properties

Weight:	(DIN 53352)	g/m ²	950±5%
Thickness:	(DIN 53353)	mm	1,30-1,50
Composition:			
Coating		PVC	80%
Textile		CO/PES	20%
Light fastness:	(DIN 75202)	Blue scale	6-7
Abrasion resistance: (Martindale)	(BS 5690)	Cycles	50.000
Rubbing fastness: (Dry+wet)	(DIN 54021)	Gray scale	5
Fire resistance: (Crib 5 test)	(BS 5852 IS-5)		passed
Width:		137 - 140 cm	
Rolls:		± 15 m	

DURIUS

Technical properties

Weight:	(DIN 53352)	g/m ²	950±5%
Thickness:	(DIN 53353)	mm	1,30-1,50
Composition:			
Coating		PVC	80%
Textile		CO/PES	20%
Light fastness:	(DIN 75202)	Blue scale	6-7
Abrasion resistance: (Martindale)	(BS 5690)	Cycles	50.000
Rubbing fastness: (Dry+wet)	(DIN 54021)	Gray scale	5
Fire resistance: (Crib 5 test)	(BS 5852 IS-5)		passed
Width:		137 - 140 cm	
Rolls:		± 15 m	

Both Polo and Durius contain anti-bacterial and anti-fungal composites.
These composites are supported by the **SANIPROOFED** trademark by **INTERCIDE**.
For further advice, please contact our sales office.

PORTUS

Technical properties

Weight:	(DIN 53352)	g/m ²	950±5%
Thickness:	(DIN 53353)	mm	1,30-1,50
Composition:			
Coating		PVC	80%
Textile		CO/PES	20%
Light fastness:	(DIN 75202)	Blue scale	6-7
Abrasion resistance: (Martindale)	(BS 5690)	Cycles	50.000
Rubbing fastness: (Dry+wet)	(DIN 54021)	Gray scale	5
Fire resistance: (Crib 5 test)	(BS 5852 IS-5)		passed
Width:		137 - 140 cm	
Rolls:		± 15 m	

Colour for indication only. Shades may vary from batch to batch and an exact match cannot be guaranteed.

CLEANING INSTRUCTIONS

Rub gently with a damp cloth or sponge using warm soapy water.
Do not use multi-purpose cleaners, agents or chemical based products.
For further advice, please contact our sales office.

MACFLEX INTERNATIONAL LTD.

Macflex House, Hill Farm, Upper Heyford, Northampton NN7 3NB

Tel: +44(01604) 833666 . Fax: +44(01604) 833678

www.macflex.com