



hitch|mylius

hm58 Rae

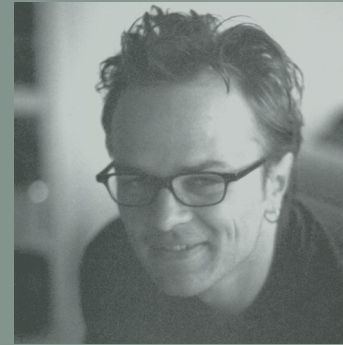
hm58 Rae

The hm58 Rae chair is a perfectly proportioned comfortable and versatile chair for all commercial and leisure environments. Its comprehensive options include stacking skid base, four-leg side chair, wire framed arm and swivel chair, oak lacquered meeting chair as well as high- and low-backed barstool. It can also be specified on a 5-star adjustable height castor base. A trolley allows it to be stacked 10 high (6 high without the trolley).

Precise stitching with its distinctive seat detail, it can be specified in the widest of fabric options and combined with bases and frames in many colour and plated options.

We offer Fast Track options - 10 working day lead time - on the hm58a side chair and hm58j barstool.

For more information, [click here](#).



Born in Germany in 1970, Matthias Demacker studied design at Niederrhein Polytechnic at Krefeld. After graduating, he moved to Munich where he gained experience in a number of design consultancies and interior design studios before setting up his own practice. He has received many international accolades including the Interior Innovation Award and the Red Dot Design Award, and is working on furniture and product designs for clients across Europe. The hm58 and hm59 collections were developed with Hitch Mylius in 2009.



hm58f swivel armchairs & hm107a table

hm**58**b 4-leg chairs with polished copper base
with hm**107**c table



hm58j & 58k barstools with hm107d high tables



hm58e swivel chairs with hm57f table



hm58p and q counterheight barstools



hm58i swivel armchairs with hm21b table



hm58a stacking chairs



hm58g wooden 4-leg chairs with hm107c table



hm58h chairs with hm19w 1-seat booths



hm58c armchairs with hm20x table



hm58r children's chairs with hm51b2 drum stool



hm**58** Rae

design: Matthias Demacker

w
d
h

w
d
h

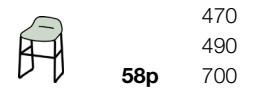
w
d
h



580
610
810



580
610
810



470
490
700



610
630
810



580
610
810



470
490
860



580
610
810



580
610
810



510
490
685



580
610
810



470
490
900



630
630
250



580
610
810



470
490
1060

seat height (standard): 470
seat height (barstool): 770
seat height (counter-height stool): 570
seat height (children's chair): 390

Showroom
2nd floor
12 Greenhill Rents
London EC1M 6BN

Factory and HQ
Alma House
301 Alma Road
Enfield EN3 7BB

T +44 (0)20 8443 2616
E sales@hitchmylius.co.uk
visit hitchmylius.co.uk

hm58 Rae environmental information chairs and stools by Matthias Demacker

dimensions (mm)

width	470-610
depth	490-630
height	685-1060
seat depth	350-450
seat height	390-770

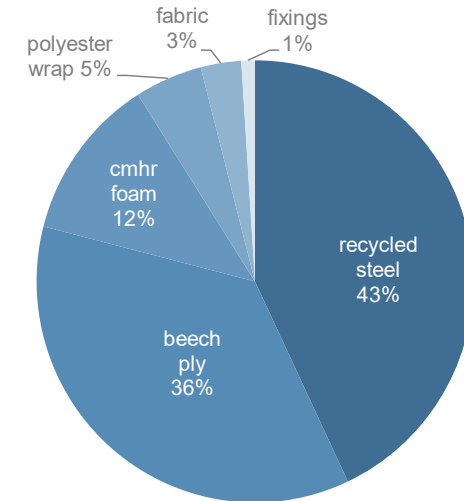
weight (kg) 6-10

facts and figures

- preformed FSC certified ply seat shell upholstered in cmhr foams
- can be finished in a wide choice of fabrics and hides
- plated or powder coated base/ frame; polished aluminium swivel base
- low VOCs; water-based glues only
- **43% recycled content**
- **90% recyclable content**



product contents (based on hm58a)



Hitch Mylius have been making beautiful and contemporary upholstered furniture in north London for over 50 years.

Our key environmental benefits include:

- ✓ Many of our key suppliers are local to us – our sofa frames and metalwork suppliers are 12 miles from our factory.
- ✓ We use water based glues.
- ✓ We use FSC certified timbers.
- ✓ It is our policy when dealing with waste to follow the waste hierarchy; prevent, reduce, reuse, recycle, recover.
- ✓ We are certified to BS EN ISO 14001:2015 and have been since October 2010.



Showroom
2nd floor
12 Greenhill Rents
London EC1M 6BN

Factory and HQ
Alma House
301 Alma Road
Enfield EN3 7BB

T +44 (0)20 8443 2616
E sales@hitchmylius.co.uk
visit hitchmylius.co.uk