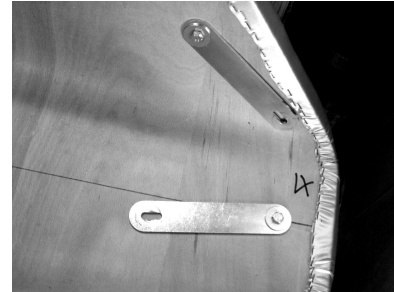


hm83 benches – how to join them together

Lay out the benches as close as possible to their final positions, and unwrap them.

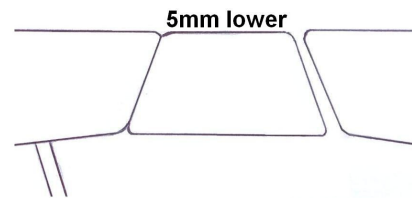
Where two benches join, one of the benches will already have the linking piece fitted.

The end of the bench that will join onto the linking piece will have the brackets fixed underneath, but swung in, as shown.

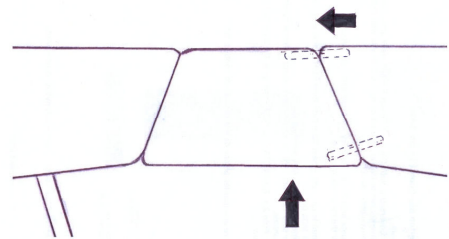


Swing the brackets out – you'll have to take the middle one off to turn it.

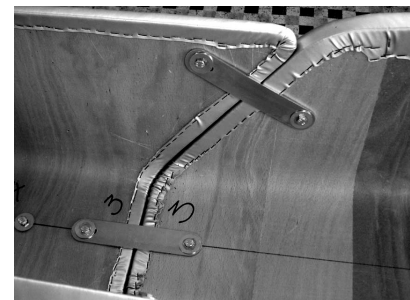
Move the two benches together so that they are touching. When they meet, make sure that the top of the linking piece is slightly (5mm) lower than the bench.



Working underneath, attach the top centre bracket with both bolts so that they are hand tight. You will have to lift the linking device slightly to allow you to attach the other two brackets. This will also close any small gap that there may have been between the bench and the linking piece.



Continuing to slightly lift the end of the linking device, tighten the brackets with a spanner, starting with the top bracket.



Each hm83 bench weighs approximately 30kg. Please ensure that you follow the correct manual handling guidelines when manoeuvring heavy items of furniture.